

Sun Odyssey

50^{PS}

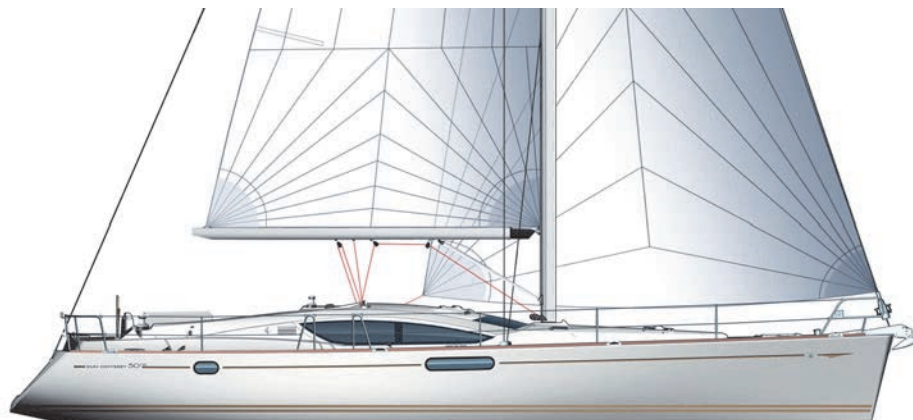


S U M M A R Y

- > SPECIFICATIONS
- > KEY POINTS
- > EXTERIOR
- > INTERIOR
- > SAILS
- > 360 DOCKING
- > CONSTRUCTION
- > UPHOLSTERY
- > ELECTRONIC PACKAGES



JEANNEAU



TECHNICAL INFORMATION

Overall length: 15,07 m / 49' 5"
 Hull length: 14,75 m / 48' 4"
 Waterline length: 13,12 m / 43'
 Beam: 4,49 m / 14' 8"

Displacement: 13.400 kg / 29.542 lbs
 Standard keel draft: 2,15 m / 7'
 Shoal keel draft: 1,69 m / 5' 6"

Cabins: 2 / 3 / 4
 Berths: 4 / 6 / 8 + 2

Engine power: Yanmar 75 Hp / 55 Kw*
 Fuel capacity: 240 l / 63 US gal
 Water capacity: 615 l / 163 US gal
 Cold capacity: 255 l / 67 US gal

Sail area:
 - Standard 101,1 m² / 1088 Sq ft

CE Category: A10 / B12 / C14 Pers
 Designers: Philippe Briand - Garroni Design
 Jeanneau Design

* Optional Yanmar 80HP Common Rail engine available

VERSIONS • LAYOUTS

Compatible 360 Docking - POD120

Fixed keel version
 Shoal draft version

2 cabins / 2 heads
 3 cabins / 2 heads
 3 cabins / 3 heads
 4 cabins / 3 heads

Exceptional style and comfort:

- Innovative design by Philippe Briand combining comfort and functionality
- Spacious cockpit with modern deck lines by Garroni Design

Impressive list of standard equipment:

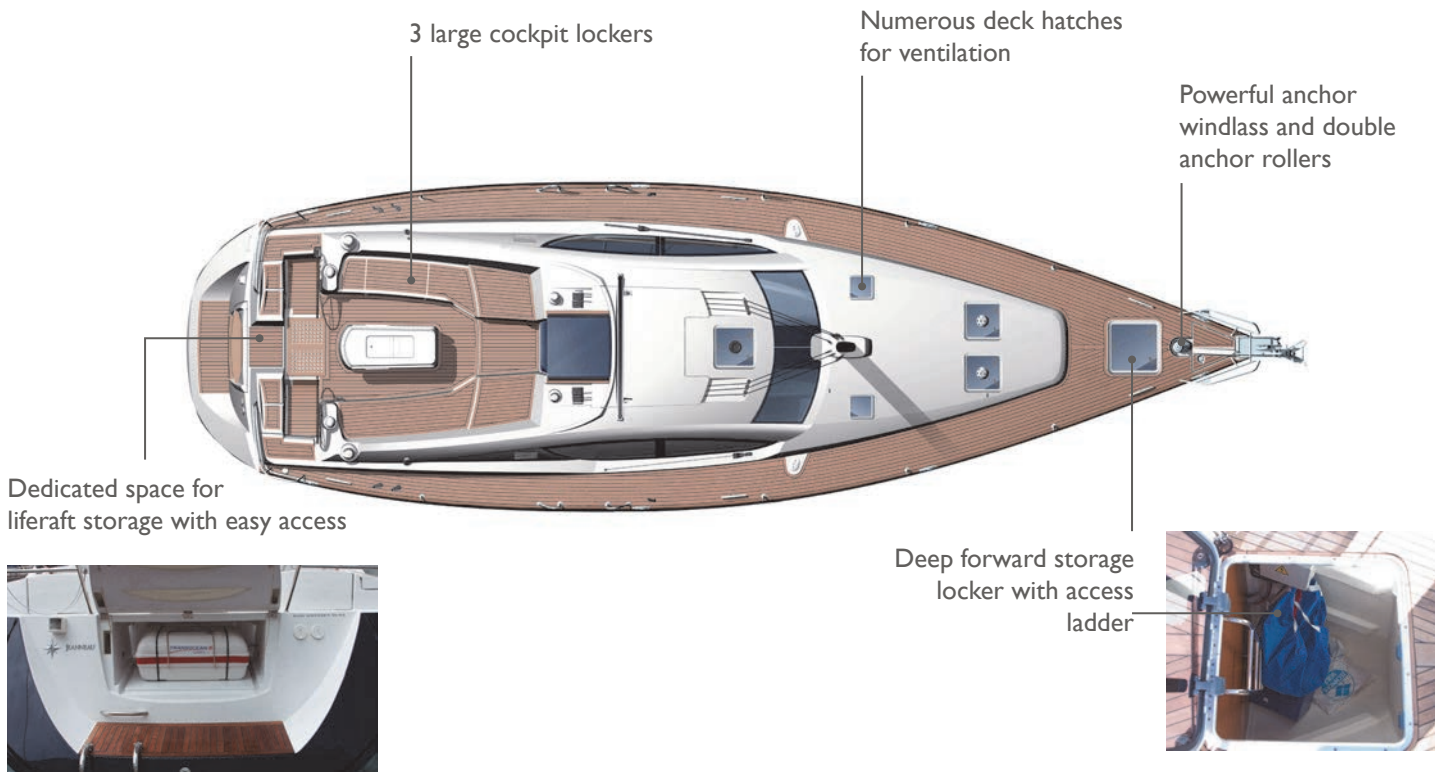
- Furling mainsail, long Harken mainsheet traveller, double stainless steel anchor roller and powerful windlass
- Forward sail locker and dedicated compartment for the liferaft in the transom
- Special spaces designed to hold optional equipment: generator, washer/dryer, etc...

Light and space created by the Deck Saloon concept:

- Very light interior thanks to deck house windows and large hull ports
- The owner's cabin can be forward to aft, depending on each owner's taste



DECK



SO50DS - 07/2015

DECK (continued)

Additional storage area under grating in the cockpit floor



Dining area with large table and seating for 6



Harken winches located near helm stations (electric winches optional)

Domed ceiling in aft cabins with opening ports extends under the cockpit table and provides headroom, ventilation and light

DECK (continued)

Helm area with electronic displays, engine controls and access to primary winches

Long Harken traveller



Lounge area forward for relaxing

Opening coachroof ports hidden behind fibreglass grills

INTERIOR LAYOUTS

2 cabins version / 2 heads



3 cabins version / 3 heads



3 cabins version / 2 heads



4 cabins version / 3 heads



3 cabins version / 2 heads

SALOON

Contemporary interior design
in Fine Teak with satin varnish

All overhead hatches with pleated insect
screens and shades

Light head liner material used
on ceiling and along hull sides
to create the maximum feeling
of space and light

Optional lounge chairs
increase seating
capacity and flexibility

Indirect lighting for cosy
atmosphere

Stylish seating around
large table

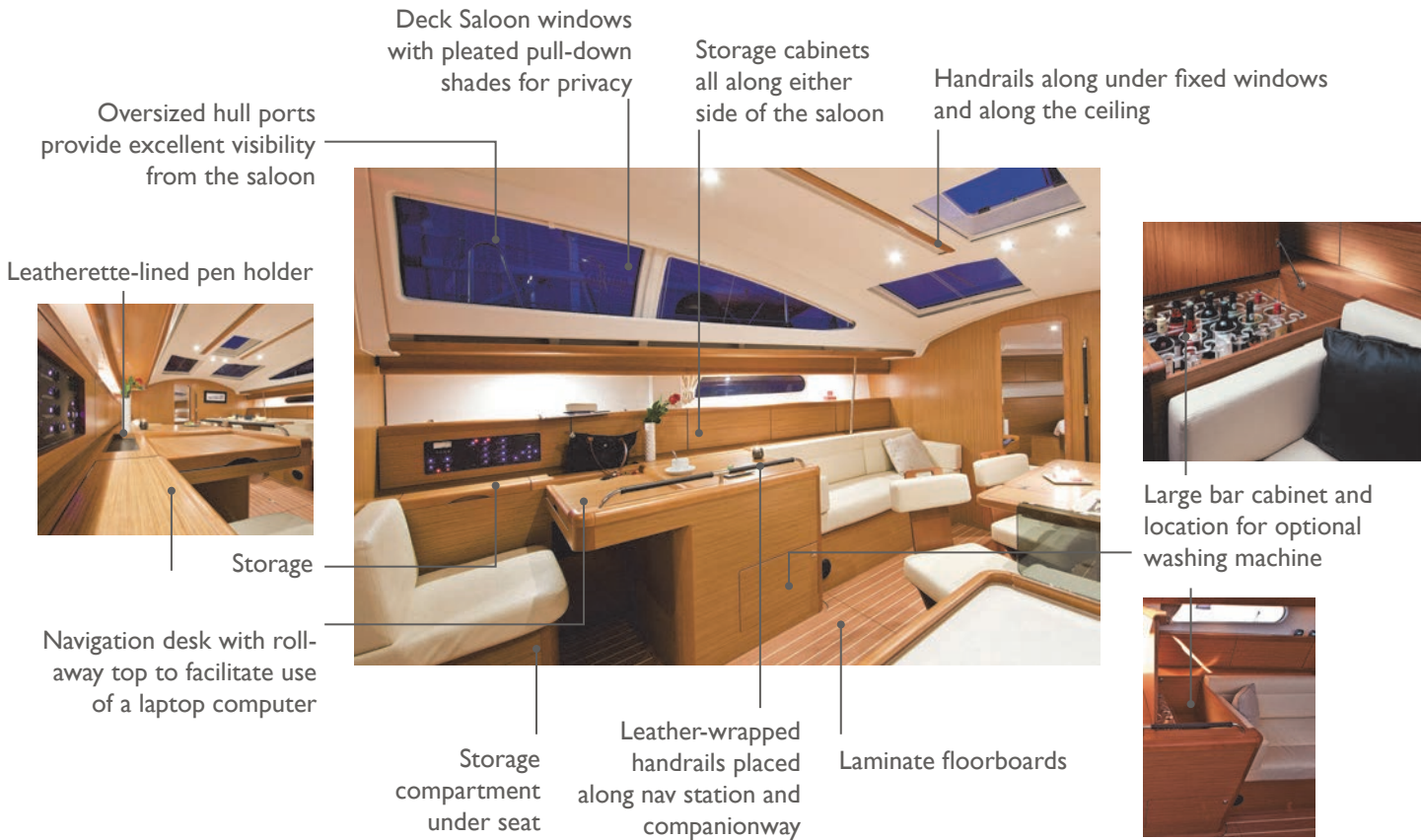


Storage bins under floor



Deluxe saloon table (option)
with storage

CHART TABLE



GALLEY



Double sink

Freezer compartment 80L with top access and optional 12V compressor

Storage cabinets with fiddles

Fridge compartment 175L with top access and optional stainless steel front access



Dedicated spot for optional microwave oven

FORWARD OWNER'S CABIN

Easy access to the berth — Upper storage cabinets along the hull sides with indirect lighting underneath



Vanity area with seat, desk and storage



Large hanging locker

Large island berth (2m x 1,63m) with PREMIUM mattress

Large owner's head with separate shower with plexi-glass door



Large storage locker

2 FORWARD CABINS

2 double berths with
PREMIUM mattresses

Removable bulkhead between cabins allows for
transformation from 2 double berths to master suite

Hanging lockers and storage
for each cabin



Storage lockers
under berths

Fold-down extension ensures
large bed and gives more space
when standing

Private head with
shower for each cabin



2 FORWARD CABINS (continued)

- Fold-down extension ensures large bed and gives more space when standing



2 AFT CABINS

Double berths (2,05m x 1,5m)
with PREMIUM mattresses

Dome under cockpit table
provides headroom, light and
ventilation



Hanging lockers in each cabin

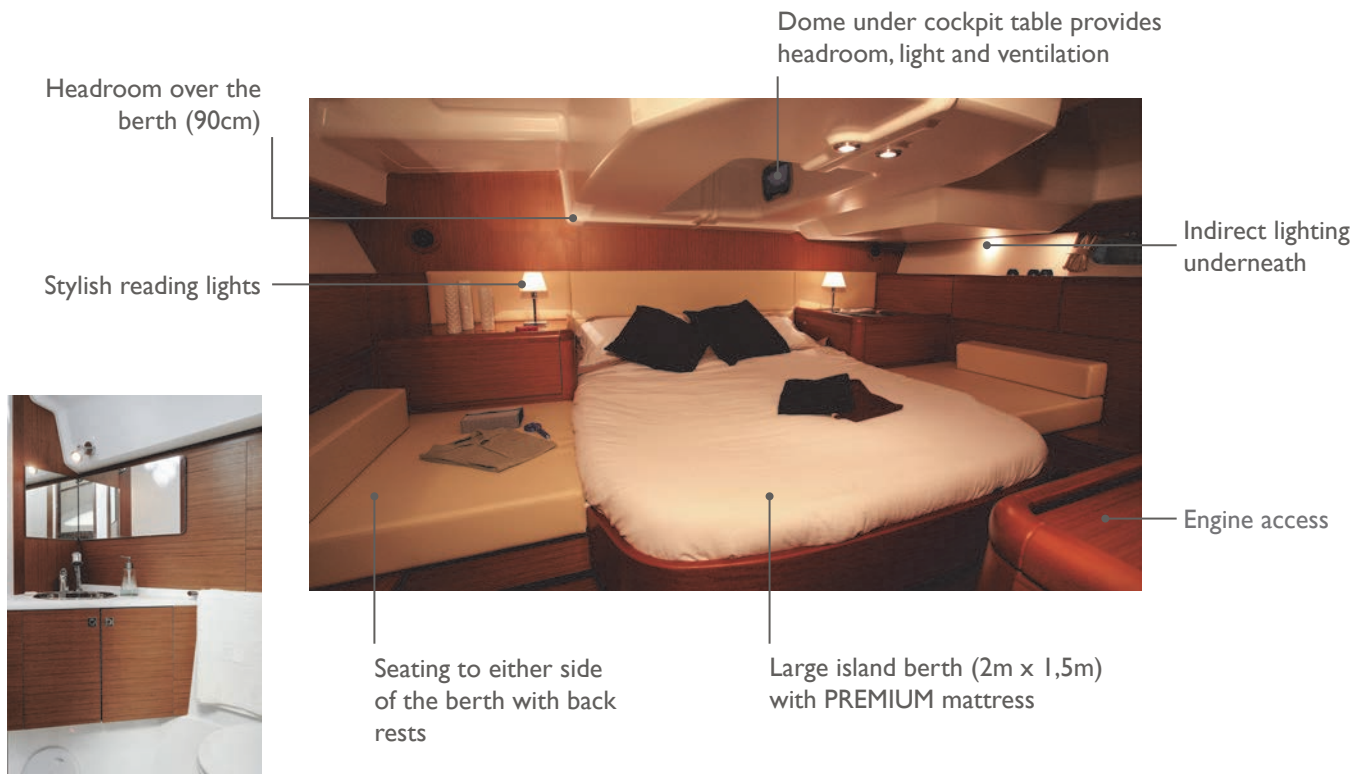
Storage cabinets along the hull sides



Desk/vanity cabinet

AFT OWNER'S CABIN

Large aft cabin with 2 hanging lockers and a private head with a separate shower compartment



SAIL AND RIG PLANS: Sails for every sailor

- Choice of **furling or classic** mainsails
- A powerful sail plan for all sailing angles
- Releasable forestay and asymmetrical spinnaker rigging available
- **Inboard shrouds and genoa tracks** allow better trim angle on the genoa and keeps the side decks clear



SPECIFICATIONS

FURLING MAINSAIL :

- Dacron®
- Horizontal panels
- UV-stabilised thread
- Radial reinforcements
- Draft stripe
- Adjustable leech line
- UV protection on clew

• **Area : 39 m²**



LARGE OVERLAPPING FURLING GENOA (140%) :

- Dacron®
- Horizontal panels
- UV-stabilised thread
- Webbing strap at head
- Bolt-rope for furler
- Anti-UV protection on foot and leech
- Draft stripe
- Foam luff
- Webbing strap at tack
- Reefing marks
- Adjustable leech line

• **Area : 62,1 m²**



ADVANTAGES

- Easy handling
- Quick furling of the sail
- Easy reefing
- Same height as the classic mainsail



I = 17,00 m / 55'9"
 J = 5,68 m / 18'7"
 P = 15,75 m / 51'8"
 E = 5,60 m / 18'4"

SPECIFICATIONS

BATTENED MAINSAIL :

- Dacron®
- Horizontal panels
- Stainless steel eyes
- UV-stabilised thread
- Draft stripe
- Radial reinforcements
- Adjustable leech line
- Loose-footed
- 2 reef points each with singleline reefing system.
(Third classic reef point)
- **Area : 49,2 m²**



ADVANTAGES

- High-aspect rig for maximum performance
- Easy to handle sail plan
- Versatile and balanced sail plan at all sailing angles



WHAT IS 360 DOCKING?

- The 360 Docking system is a revolutionary propulsion system developed by Jeanneau and ZF Marine. This unique system allows easy and safe manoeuvring of a sailboat in tight quarters via a joystick mounted in the cockpit.
- 360 Docking: Docking made easy!

DIFFERENT MODELS AVAILABLE:

- The 360 Docking system has been developed in several different sizes in order to adapt it to sailboats from 40 to 57':

POD60 : 38' – 42'
POD90 : 43' – 49'
POD120 : 50' – 54'
POD180 : 55' – 58'



HOW DOES IT WORK?

- The concept is simple: the engine is coupled with a pivoting sail drive, capable of rotating 360°.
- The joystick transmits the commands to a control box, which uses the autopilot to lock the helm. Then, a simple movement of the joystick controls the orientation and the thrust of the pod, as well as the bowthruster when moving sideways.
- You can vary throttle power with the joystick. You can also combine movements, like rotation and forward moment to turn and move forward at the same time.



> Forward movement: saildrive facing aft



> Sideways movement: saildrive turns 90° and activates bowthruster



> Aft movement: saildrive turns 180°



> Rotation: saildrive turns 90° to pivot boat around axis

UNIQUE FEATURES OF THE SYSTEM:

- **Sideway manoeuvring:** manoeuvre in ways never before possible
- **Easy and powerful rotation:** using the saildrive leg at 90°, the boat can be rotated easily and quickly using the main engine, which is much more powerful than the bowthruster.
- **Very powerful reverse gear:** both with throttle and joystick due to the fact that the sail drive turns around 180° so that the propeller is always facing “forward.” This also means that folding propellers work very well with the system.
- **Ability to stop and adapt:** with the ability to move in any direction while applying variable power means that normal steerageway is not necessary for manoeuvring. The boat can be stopped, repositioned and moved at the touch of the joystick without having to do every manoeuvre at higher speeds. Safety and piece of mind.
- **Better visibility when manoeuvring:** most of our boats allow the helmsman to be standing when using the joystick so that he or she has a better view of the dock than if reaching down to use a traditionally-placed throttle control.
- **Comfort of an electronic throttle:** the regular throttle on the boat is electronic. This makes it easy to use.
- **Gearbox longevity:** since there is no reverse gear, the 360 Docking gearbox does not include any of the conical gears that typically wear out in standard gearboxes.

FAQ :

- **Is this system available from other boat manufacturers?**
The partnership between ZF Marine and the Groupe Beneteau means that only Jeanneau and Beneteau boats have access to this technology. Our exclusive agreement extends into 2014.
- **Can I use a folding propeller?**
Yes, folding propellers work very well with the system because the main drawback of folding propellers is that they don't work in reverse, but since the drive always rotates to face forward to the direction you want to go, the folding propeller works efficiently, even in reverse. We recommend Flex-o-Fold propellers.
- **Can I use a feathering (Max-Prop) propeller?**
No, there is no need to use a feathering propeller, as they are designed to rotate the blades when in reverse, so there is no clear advantage to installing these on a drive system with no reverse gear.
- **If, for some reason, there is a failure, can I rotate the saildrive manually?**
Yes, it can be rotated back into position manually in case of failure.

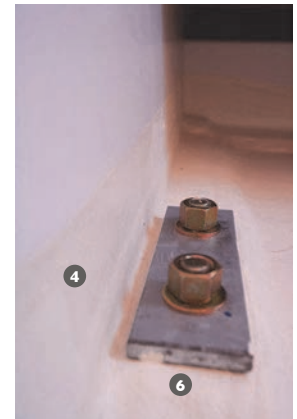


COUNTER-MOULDING

3rd generation hull structure

Jeanneau has long been known for strong and seaworthy boats. Today the technology of boatbuilding has evolved, but our commitment to this tradition has not wavered. The Jeanneau 3rd Generation Hull Structure combines the latest in fiberglass technology with modern yacht design to deliver a structural reinforcement perfectly adapted to the demands of the offshore sailor.

- ❶ High-load zones cut-out for access to the hull
- ❷ Integrated repair area at aft end of keel
- ❸ Structure is precisely placed in the hull
- ❹ Glued and relaminated to the hull for strength
- ❺ Acts as a support for the floorboards
- ❻ Keel bolts located near vertical members and through counter mould and hull
- ❼ Limber holes at hull level for efficient drainage
- ❽ Counter mould remains below level of floorboards and is not visible



ALPI WOOD - FINETEAKE

SALES POINTS:

Environmental:

- Ayous (Triplochiton scleroxylon - Sterculiacées) trees in managed forests of indigenous hardwoods are selected and cut, with a constant care given towards long term preservation of natural resources.
- Teak and other soft rainforest woods often come from geopolitically sensitive regions and are not managed in a sustainable way.

Quality:

- These ALPI wood panels are substantially more expensive and reliable than standard marine plywood. They are used by top of the line furniture manufacturers, as well as many exclusive super-yacht builders (for example Azimut and Ferretti only use ALPI wood).
- Consistency of finish and colors throughout the boat.
- Elimination of “defects” in wood panels.

Durability:

- Harder finish that is more resistant to humidity
- Better resistance to UV
- Easier repairs as veneer is tinted through and through so clear varnishes can be used

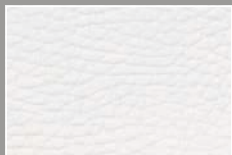


➤ UPHOLSTERY

SALOON: 4 choices available



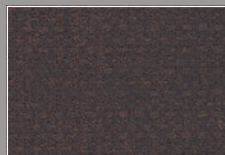
▶ PURE WHITE :



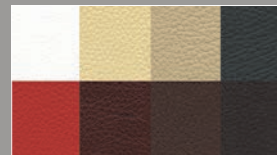
▶ LINEN :



▶ EXPRESSO :
Choco expresso



▶ LEATHER :
8 colours available - See fabric samples

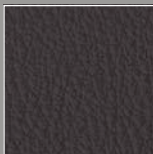


SALOON + CABINS: Fabrics associated with all ambiance choices

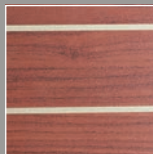
SALOON



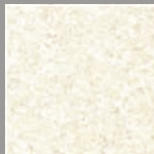
UPHOLSTERY leather/
leatherette ▶ *Chocolat*



FLOOR
▶ *Standard*



CARPET
▶ *Option*

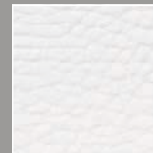


Infill cushion for convertible berth in Linen

CABINS

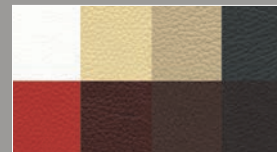
SEATS

▶ *PVC Mediterraneo*
Old White



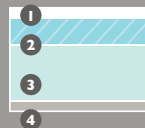
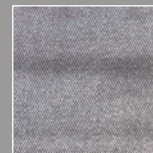
CURTAINS

▶ *Producer Lapis*



BEDS

▶ *Premium mattress*



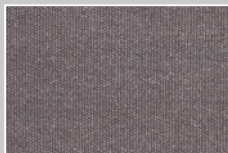
- 1- Removable mattress cover fabric with Ultra-Fresh® is anti-microbial, anti-bacterial and non-allergenic
- 2- Top: 40mm of High-Resilience foam
- 3- Base: 80mm of high-density polyether foam
- 4- Breathable fabric

EXTERIOR UPHOLSTERY

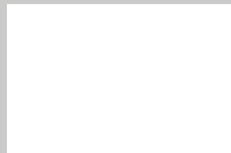
SPRAYHOOD PROTECTION BIMINI / LAZY BAG



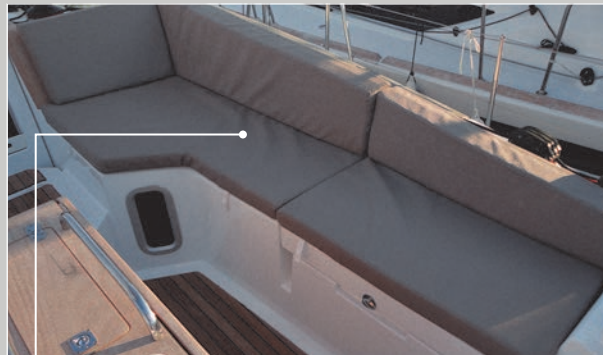
▶ Sunbrella taupe



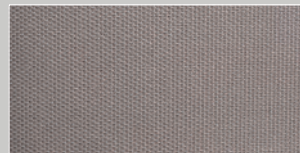
▶ White PVC



COCKPIT CUSHIONS

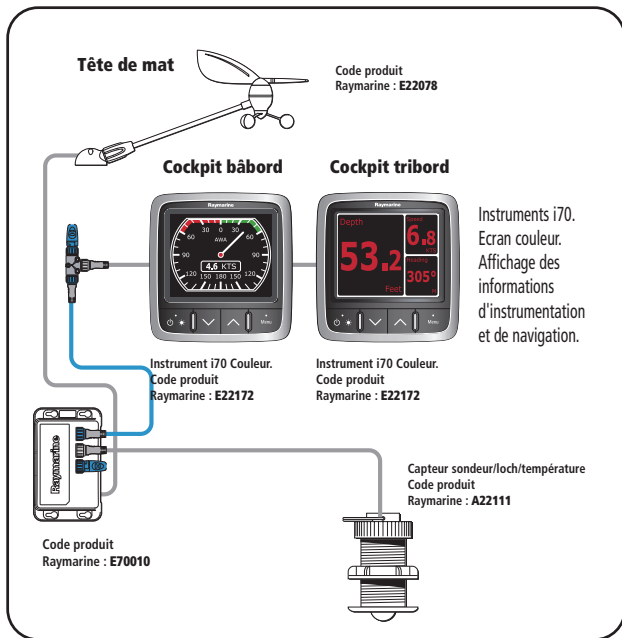


▶ Sunbrella sling taupe



Raymarine

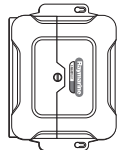
Pack Electronique



OPTIONS 1/2

Complément Pilote automatique inboard - Cockpit bâbord

Pupitre de commande couleur p70
Code produit Raymarine : **E22166**



Compas électronique avec Gyro EV-1, Calculateur ACU-400 12/24 V, et capteur d'angle de barre
Code produit Raymarine : **E70096 + E70100**

Pilote automatique inboard équipé d'un boîtier de commande couleur p70. Affichage du cap suivi et à suivre, virement de bord, asservissement aux informations de navigation du GPS ou du lecteur de carte.

Ecran a125 couleur tactile cockpit WXGA 1280 x 800 pixels



Ecran tactile Radar/GPS Traceur lecteur de cartes
Carte Navionics Silver fournie
Code produit Raymarine : **E70235**



Raymarine

OPTIONS 2/2

**Antenne radôme digitale 4 kw
48NM 18 " (Antenne seule).**



4kw 48 NM 18" Antenne radôme fournie
avec câble radar et support de mat.
Code produit Raymarine : **E92130**

**Télécommande pilote
Répétiteur instruments
sans fil SmartController**



Code produit Raymarine : **E15023**



July 2015 - Non contractual document