

Sun Odyssey

45<sup>DS</sup>

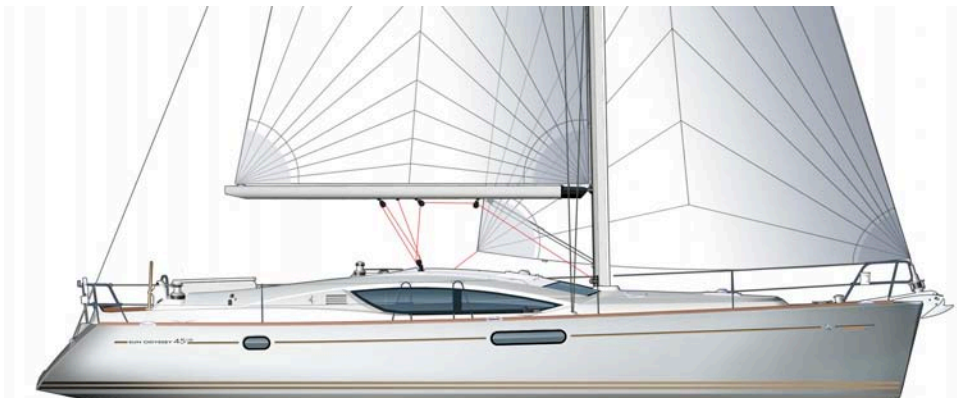


## S U M M A R Y

- > SPECIFICATIONS
- > KEY POINTS
- > EXTERIOR
- > INTERIOR
- > SAILS
- > 360 DOCKING
- > CONSTRUCTION
- > UPHOLSTERY
- > ELECTRONIC PACKAGES



JEANNEAU



## TECHNICAL INFORMATION

Overall length: ..... 13,75 m / 45' 1"  
 Hull length: ..... 13,41 m / 43' 11"  
 Waterline length: ..... 11,45 m / 37' 6"  
 Beam: ..... 4,37 m / 14' 4"

Displacement: ..... 10.400 kg / 22.928 lbs  
 Standard keel draft: ..... 2,05 m / 6' 8"  
 Shoal keel draft: ..... 1,65 m / 5' 4"

Cabins: ..... 2 / 3  
 Berths: ..... 4 / 8 + 2

Engine power: ..... Yanmar 54 Hp / 40 Kw  
 Fuel capacity: ..... 240 l / 63 US gal  
 Water capacity: ..... 615 l / 163 US gal  
 Cold capacity: ..... 255 l / 67 US gal

Sail area:  
 - Standard ..... 89,9 m<sup>2</sup> / 967 Sq ft

CE Category: ..... A8 / B12 / C14 Pers  
 Designers: ..... Philippe Briand - Garroni Design  
 .....Jeanneau Design

## VERSIONS • LAYOUTS

Compatible 360 Docking - POD120

Fixed keel version  
 Shoal draft version

2 cabins / 2 heads  
 3 cabins / 2 heads

### **Powerful and performance-oriented hull**

- Designed by Philippe Briand

### **Contemporary interior design**

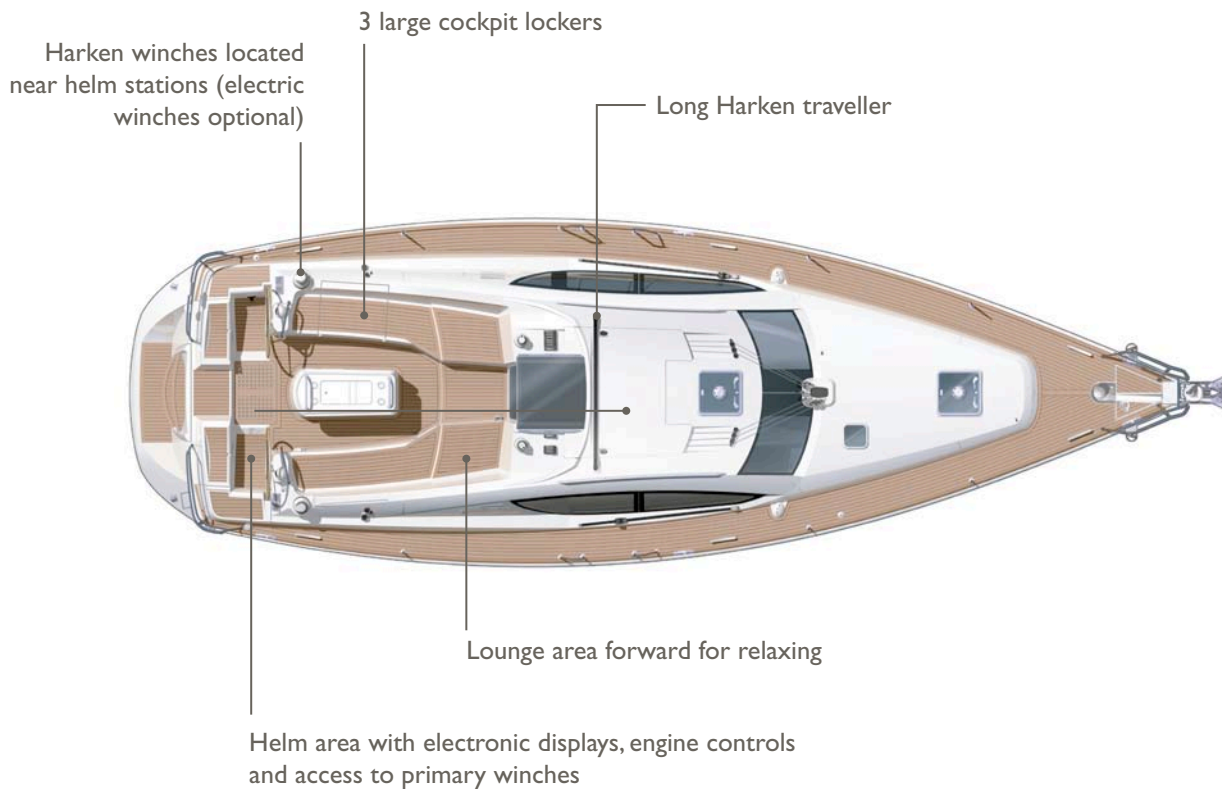
- Philippe Briand design with solid wood and warm tones
- Designed via CATIA, the most powerful design software available, ensures that every detail has been carefully studied

### **Deck Saloon concept**

- Light and panoramic visibility
- Very spacious aft owner's cabin



DECK



DECK (continued)

Opening coachroof ports hidden behind fibreglass grills



Dining area with large table and seating for 6



Domed ceiling in aft cabins with opening ports extends under the cockpit table and provides headroom, ventilation and light

Additional storage area under grating in the cockpit floor



Dedicated space for liferaft storage with easy access

INTERIOR LAYOUTS

**2 cabins version / 2 heads**



**3 cabins version / 2 heads**



SALOON

Handrails along under fixed windows and along the ceiling

Oversized hull ports provide excellent visibility from the saloon

Indirect lighting for cosy atmosphere



Large bar cabinet and location for optional washing machine

Laminate floorboards

Storage bins under floor

SALOON (continued)

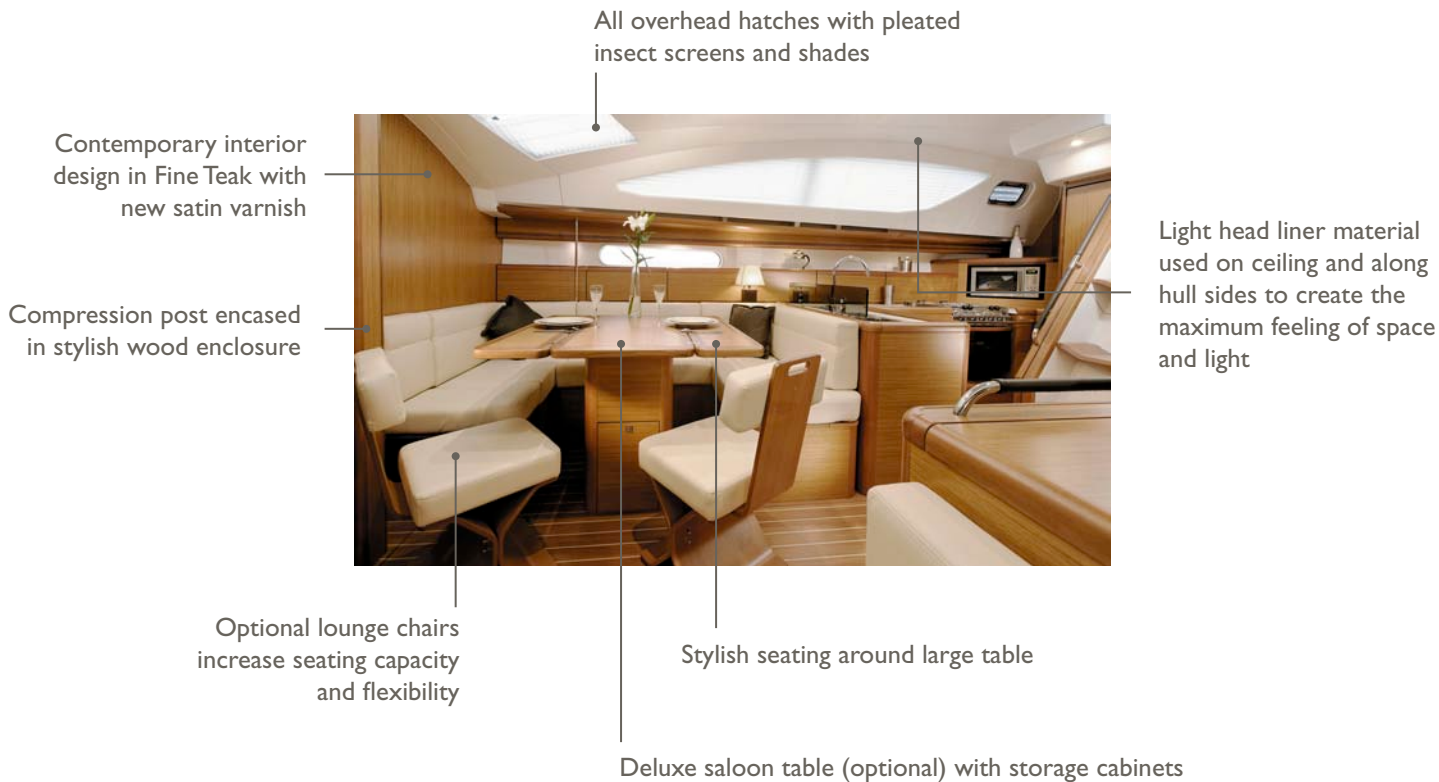




CHART TABLE

Deck Salon windows with pleated pull-down shades for privacy



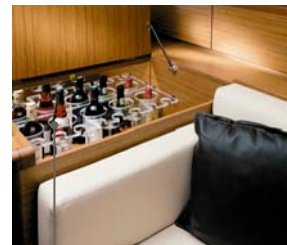
Navigation desk with roll-away top to facilitate use of a laptop computer

Storage under seat

Leather-wrapped handrails placed along nav station and companionway

Comfortable sofa seating

Storage cabinets all along either side of the salon



Large bar cabinet and location for optional washing machine



GALLEY

Freezer compartment 80L with top access and optional 12V compressor



Fridge compartment 175L with top access and optional stainless steel front access

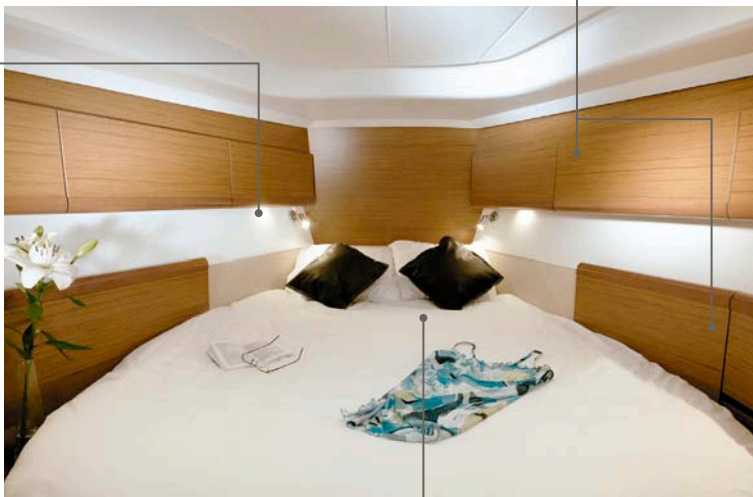
Double sink



FORWARD OWNER'S CABIN

Upper storage cabinets along the hull sides

Indirect LED lighting



Large hanging locker



Opening vanity cabinet with leather lining

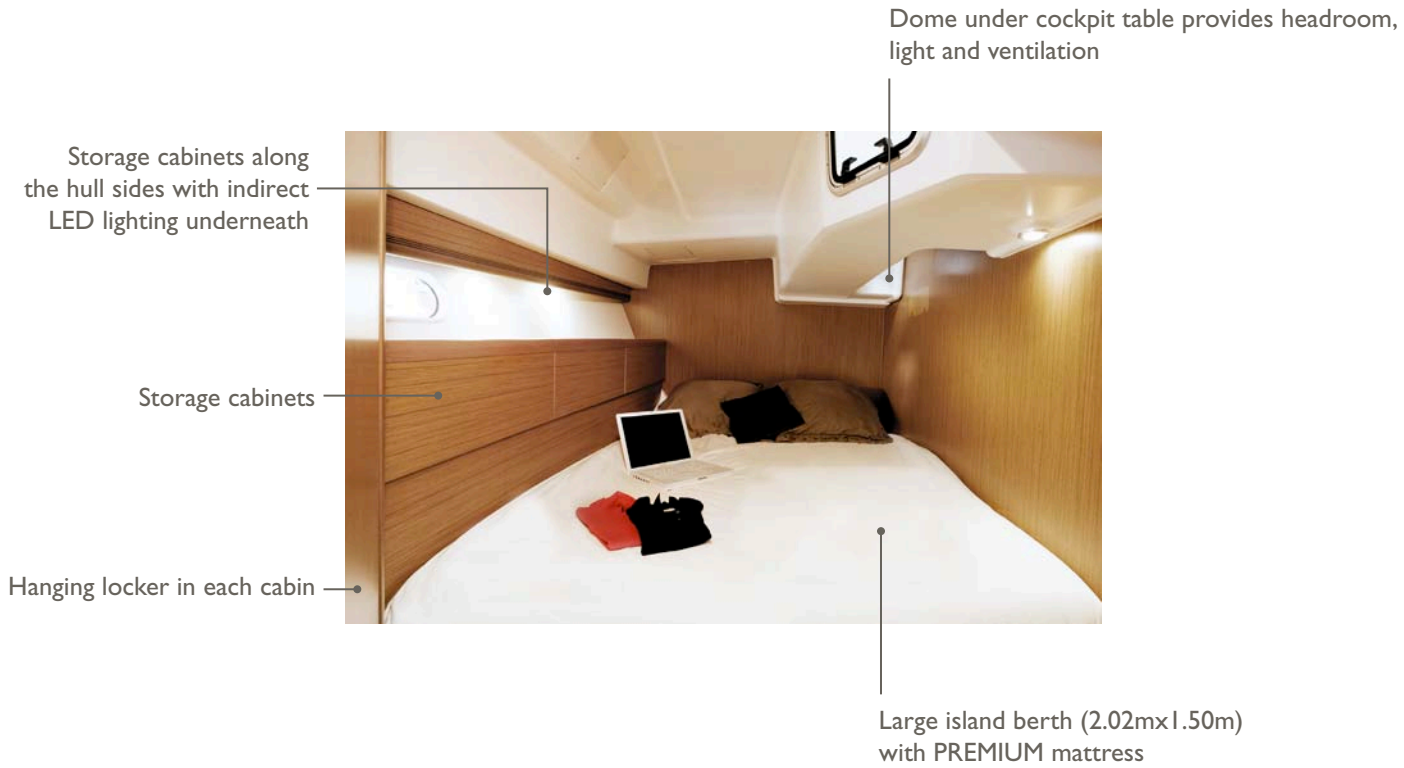
Large island double berth (2m x 1.6m) with PREMIUM mattress

Solid surface countertop and stainless steel sink



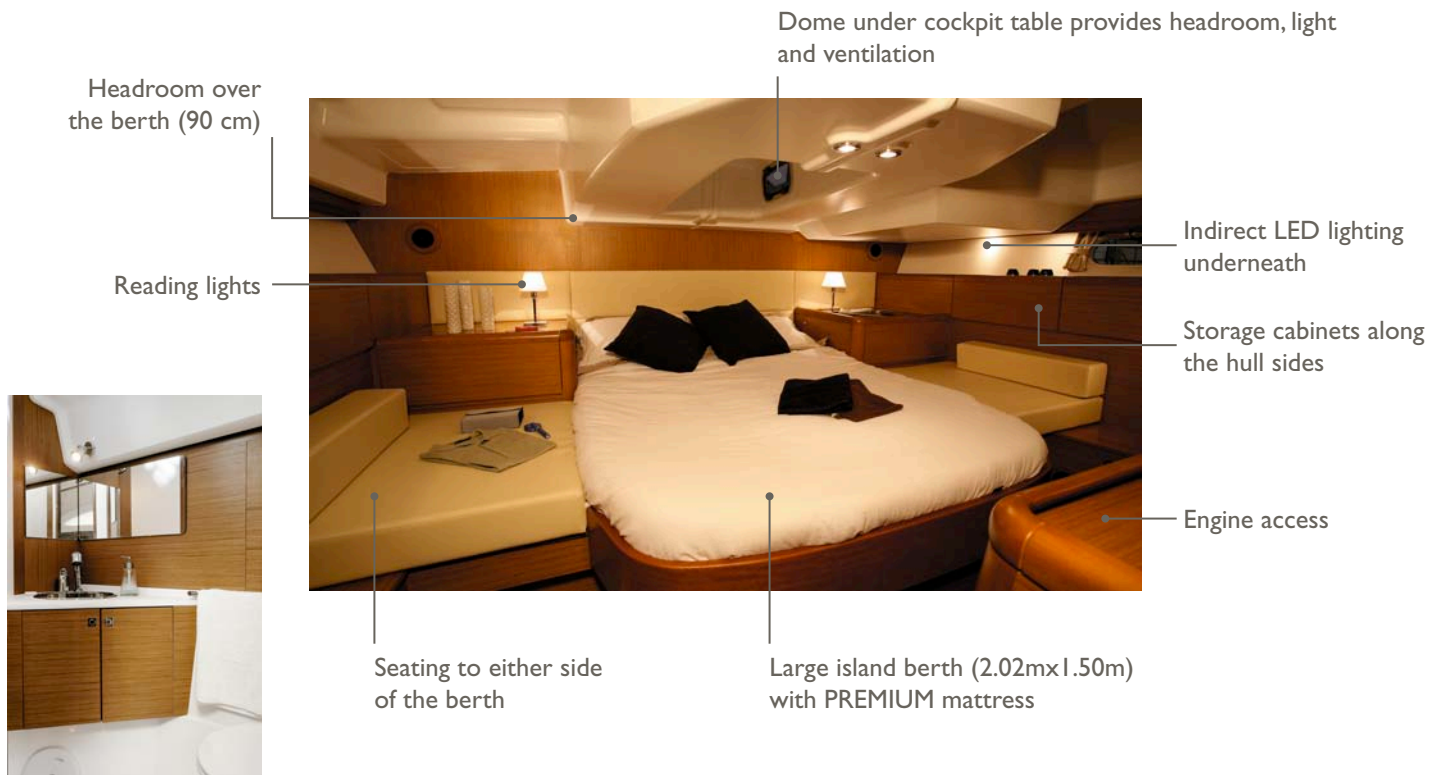
Tri-fold plexiglass shower divider

2 AFT CABINS



## AFT OWNER'S CABIN

Large aft cabin with 2 hanging lockers and a private head with a separate shower compartment



# BLACK LABEL

Includes :

- LED Navigation lights
- BOSE speaker system in saloon
- Cockpit speakers
- Additional domestic battery
- Battery charger
- 12V compressor for freezer compartment
- Bow thruster
- 3-burner stove and grill
- Sprayhood "Black Label"
- Teak cockpit table
- Teak step on coaming

## SAIL AND RIG PLANS: Sails for every sailor

- Choice of **furling or classic mainsails**
- A powerful sail plans for all sailing angles
- Releasable forestay and asymmetrical spinnaker rigging available
- **Inboard shrouds and genoa** tracks allow better trim angle on the genoa and keeps the side decks clear



SPECIFICATIONS

**FURLING MAINSAIL :**

- Dacron®
- Horizontal panels
- UV-stabilised thread
- Radial reinforcements
- Draft stripe
- Adjustable leech line
- UV protection on clew

• **Area : 36,9 m<sup>2</sup>**



**LARGE OVERLAPPING FURLING GENOA (150%) :**

- Dacron®
- Horizontal panels
- UV-stabilised thread
- Webbing strap at head
- Bolt-rope for furler
- Anti-UV protection on foot and leech
- Draft stripe
- Foam luff
- Webbing strap at tack
- Reefing marks
- Adjustable leech line

• **Area : 53 m<sup>2</sup>**



ADVANTAGES

- Easy handling
- Quick furling of the sail
- Easy reefing
- Same height as the classic mainsail

I = 16,54 m / 54'3"  
 J = 4,65 m / 15'3"  
 P = 15,27 m / 50'1"  
 E = 5,30 m / 17'4"





## SPECIFICATIONS

### BATTENED MAINSAIL :

- Dacron®
- Horizontal panels
- Stainless steel eyes
- UV-stabilised thread
- Draft stripe
- Radial reinforcements
- Adjustable leech line
- Loose-footed
- 2 reef points each with singleline reefing system.  
(Third classic reef point)
- **Area : 47,2 m<sup>2</sup>**



## ADVANTAGES

- High-aspect rig for maximum performance
- Easy to handle sail plan
- Versatile and balanced sail plan at all sailing angles



### WHAT IS 360 DOCKING?

- The 360 Docking system is a revolutionary propulsion system developed by Jeanneau and ZF Marine. This unique system allows easy and safe manoeuvring of a sailboat in tight quarters via a joystick mounted in the cockpit.
- 360 Docking: Docking made easy!

### DIFFERENT MODELS AVAILABLE:

- The 360 Docking system has been developed in several different sizes in order to adapt it to sailboats from 40 to 57':

**POD60 : 38' – 42'**  
**POD90 : 43' – 49'**  
**POD120 : 50' – 54'**  
**POD180 : 55' – 58'**



### HOW DOES IT WORK?

- The concept is simple: the engine is coupled with a pivoting sail drive, capable of rotating 360°.
- The joystick transmits the commands to a control box, which uses the autopilot to lock the helm. Then, a simple movement of the joystick controls the orientation and the thrust of the pod, as well as the bowthruster when moving sideways.
- You can vary throttle power with the joystick. You can also combine movements, like rotation and forward moment to turn and move forward at the same time.



> Forward movement: saildrive facing aft



> Sideways movement: saildrive turns 90° and activates bowthruster



> Aft movement: saildrive turns 180°



> Rotation: saildrive turns 90° to pivot boat around axis

## UNIQUE FEATURES OF THE SYSTEM:

- **Sideway manoeuvring:** manoeuvre in ways never before possible
- **Easy and powerful rotation:** using the saildrive leg at 90°, the boat can be rotated easily and quickly using the main engine, which is much more powerful than the bowthruster.
- **Very powerful reverse gear:** both with throttle and joystick due to the fact that the sail drive turns around 180° so that the propeller is always facing “forward.” This also means that folding propellers work very well with the system.
- **Ability to stop and adapt:** with the ability to move in any direction while applying variable power means that normal steerageway is not necessary for manoeuvring. The boat can be stopped, repositioned and moved at the touch of the joystick without having to do every manoeuvre at higher speeds. Safety and piece of mind.
- **Better visibility when manoeuvring:** most of our boats allow the helmsman to be standing when using the joystick so that he or she has a better view of the dock than if reaching down to use a traditionally-placed throttle control.
- **Comfort of an electronic throttle:** the regular throttle on the boat is electronic. This makes it easy to use.
- **Gearbox longevity:** since there is no reverse gear, the 360 Docking gearbox does not include any of the conical gears that typically wear out in standard gearboxes.

## FAQ :

- **Is this system available from other boat manufacturers?**  
The partnership between ZF Marine and the Groupe Beneteau means that only Jeanneau and Beneteau boats have access to this technology. Our exclusive agreement extends into 2014.
- **Can I use a folding propeller?**  
Yes, folding propellers work very well with the system because the main drawback of folding propellers is that they don't work in reverse, but since the drive always rotates to face forward to the direction you want to go, the folding propeller works efficiently, even in reverse. We recommend Flex-o-Fold propellers.
- **Can I use a feathering (Max-Prop) propeller?**  
No, there is no need to use a feathering propeller, as they are designed to rotate the blades when in reverse, so there is no clear advantage to installing these on a drive system with no reverse gear.
- **If, for some reason, there is a failure, can I rotate the saildrive manually?**  
Yes, it can be rotated back into position manually in case of failure.

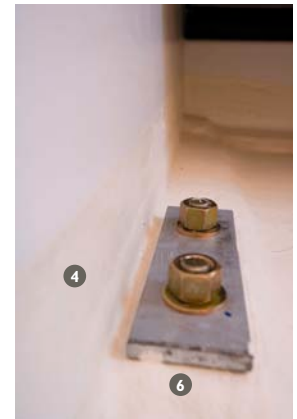


## COUNTER MOULDING

### 3<sup>rd</sup> generation hull structure

Jeanneau has long been known for strong and seaworthy boats. Today the technology of boatbuilding has evolved, but our commitment to this tradition has not wavered. The Jeanneau 3<sup>rd</sup> Generation Hull Structure combines the latest in fiberglass technology with modern yacht design to deliver a structural reinforcement perfectly adapted to the demands of the offshore sailor.

- ❶ High-load zones cut-out for access to the hull
- ❷ Integrated repair area at aft end of keel
- ❸ Structure is precisely placed in the hull
- ❹ Glued and relaminated to the hull for strength
- ❺ Acts as a support for the floorboards
- ❻ Keel bolts located near vertical members and through counter mould and hull
- ❼ Limber holes at hull level for efficient drainage
- ❽ Counter mould remains below level of floorboards and is not visible



## ALPI WOOD - FINETEAKE

### SALES POINTS:

#### Environmental:

- Ayous (Triplochiton scleroxylon - Sterculiacées) trees in managed forests of indigenous hardwoods are selected and cut, with a constant care given towards long term preservation of natural resources.
- Teak and other soft rainforest woods often come from geopolitically sensitive regions and are not managed in a sustainable way.

#### Quality:

- These ALPI wood panels are substantially more expensive and reliable than standard marine plywood. They are used by top of the line furniture manufacturers, as well as many exclusive super-yacht builders (for example Azimut and Ferretti only use ALPI wood).
- Consistency of finish and colors throughout the boat.
- Elimination of “defects” in wood panels.

#### Durability:

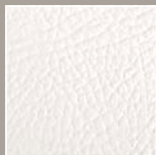
- Harder finish that is more resistant to humidity
- Better resistance to UV
- Easier repairs as veneer is tinted through and through so clear varnishes can be used



SALOON: 5 choices available



▶ **MEDITERRANEO :**  
PVC Mediterraneo Old White



▶ **METROM :**  
Métrom écru



▶ **NATUREL :**  
Cortina naturel



▶ **EXPRESSO :**  
Choco expresso



▶ **LEATHER :**  
8 colours available - See fabric samples

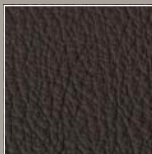


SALOON + CABINS: Fabrics associated with all ambiance choices

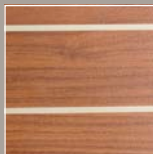
SALOON



**UPHOLSTERY** leather / leatherette ▶ *Chocolat*



**FLOOR** ▶ *Standard*



**CARPET** ▶ *Option*

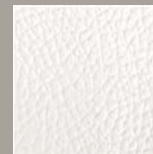


Infill cushion for convertible berth in Cortina naturel fabric

CABINS

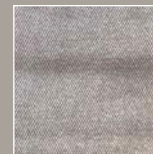
**SEATS**

▶ *PVC Mediterraneo Old White*



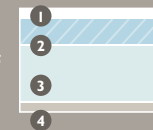
**CURTAINS**

▶ *Producer Lapis*



**BEDS**

▶ *Premium mattress*



- 1- Removable mattress cover fabric with Ultra-Fresh® is anti-microbial, anti-bacterial and non-allergenic
- 2- Top: 40mm of High-Resilience foam
- 3- Base: 80mm of high-density polyether foam
- 4- Breathable fabric

## EXTERIOR UPHOLSTERY

### SPRAYHOOD PROTECTION BIMINI / LAZY BAG



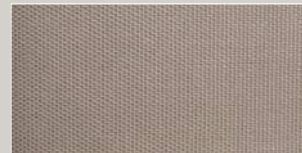
▶ *Sunbrella taupe*



### COCKPIT CUSHIONS



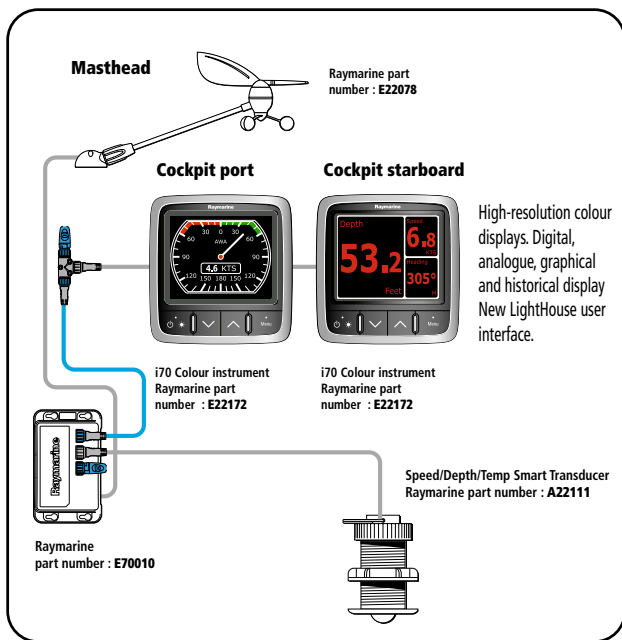
▶ *Sunbrella sling taupe*





# Raymarine

## Electronic Pack

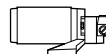
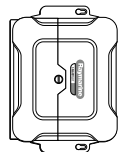


## OPTIONS 1/2

### Optional inboard autopilot Cockpit port



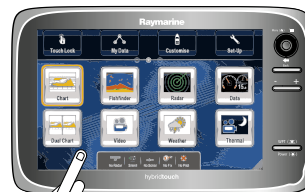
p70 Colour Autopilot Control Head  
Raymarine part number: **E12166**



Course computer SPX30 12/24 V with built-in Rate Gyro, fluxgate compass, rudder reference transducer.  
Raymarine part number: **E12199**

Autopilot with p70 controlhead SeaTalk/NMEA Interface to GPS and i70 instruments. Backlit LCD confirms current and locked heading, plus wind and navigational data when connected to a MFD display.

### e125 Multifunction Touchscreen Display WXGA 1280 x 800 pixels in the cockpit



Touchscreen Multifunction display,  
Navionics Silver supplied  
Raymarine part number: **T70052**



# Raymarine

## OPTIONS 2/2

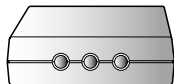
### Digital Radar radome antenna 48 NM 18"



DIGITAL radar antenna supplied with antenna cable and mast bracket.  
Raymarine part number: **E92130 + A55079D + M92722**

### PC interface

SeaTalk/NMEA RS232 interface bridge for PC.  
Raymarine part number: **E85001**  
Supplied with RS232 to USB convertor  
**3001-1001-11**



### SmartController Wireless remote



Raymarine part number: **E15023**



**JEANNEAU**

July 2012 - Non contractual document