

Sun Odyssey

439



S U M M A R Y

- > SPECIFICATIONS
- > KEY POINTS
- > EXTERIOR
- > INTERIOR
- > SAILS
- > CONSTRUCTION
- > UPHOLSTERY
- > ELECTRONIC PACKAGES



JEANNEAU



TECHNICAL INFORMATION

Overall length: 13,34 m / 43' 9"
 Hull length: 12,99 m / 42' 7"
 Waterline length: 12,00 m / 39' 4"
 Beam: 4,24 m / 13' 10"

Displacement: 9.640 kg / 21.253 lbs
 Standard keel draft: 2,20 m / 7' 2"
 Shoal draft: 1,60 m / 5' 2"

Cabins: 2 / 3 / 4
 Berths: 4 / 6 / 8 + 2

Engine power: Yanmar 54 Hp / 40 Kw
 Fuel capacity: 200 l / 53 US gal
 Water capacity: 330 l / 87 US gal
 Cold capacity: 185 l / 49 US gal

Sail area:
 - Standard 91 m² / 979 Sq ft

CE Category: A10 / B11 / C12 Pers
 Designers: Philippe Briand - Jeanneau Design

VERSIONS • LAYOUTS

Fixed keel version
 Shoal draft version

2 cabins / 2 heads
 3 cabins / 2 heads
 4 cabins / 2 heads

EXTERIOR

Innovative deck plan and sleek styling:

- Mainsheet led back to each helm: integrated lines make for a clean and safe deck layout
- Flush hatches
- Easy access to the sea via a fold-down transom

Completely re-designed sail plan choices can be ordered “à la carte” :

- Furling mainsail
- Performance mainsail
- 106% performance jib
- 140% performance genoa
- Self-tacking jib
- Code 0

INTERIOR

Interior design focused on volume

- Spacious saloon set off by indirect LED lighting
- Vast forward cabin with central island berth with desk and spacious forward head compartment
- Lots of light and ventilation from 8 hull ports and plenty of flush hatches and ports
- Forward visibility

> Optimised layouts:

- 4 cabin layout
- Each head compartment has a separate shower
- Lots of possibilities for personalisation (choice of flooring, fabrics and options)
- Plenty of standard equipment (windlass, shorepower, etc...)



DECK



Liferaft locker under cockpit floor

Storage for companionway hatch board under cockpit floor



Space for a solar panel (option)



Fold down transom platform



Long Harken traveller

Tracks for standard genoa integrated into deck

Flush hatches

Space for a solar panel (option)

Special curved flush hatch for maximum light, ventilation and forward visibility



DECK (continued)

Large cockpit locker opens into sail locker
(2 cabin version)

Curved plexi windows
in aft cabins provide light



Large cockpit table with
plenty of storage and place
for a pivoting GPS mount

Twin-helm design to facilitate
movement and comfort



All lines lead aft under
coachroof

Primary winches near helm
stations

Line storage lockers under helm seats keep helm
station clear



INTERIOR LAYOUTS

2 cabins version / 2 heads



3 cabins version / 2 heads



4 cabins version / 2 heads



SALOON - GALLEY

Long saloon with L galley with a return that makes it safe and easy to use even when underway



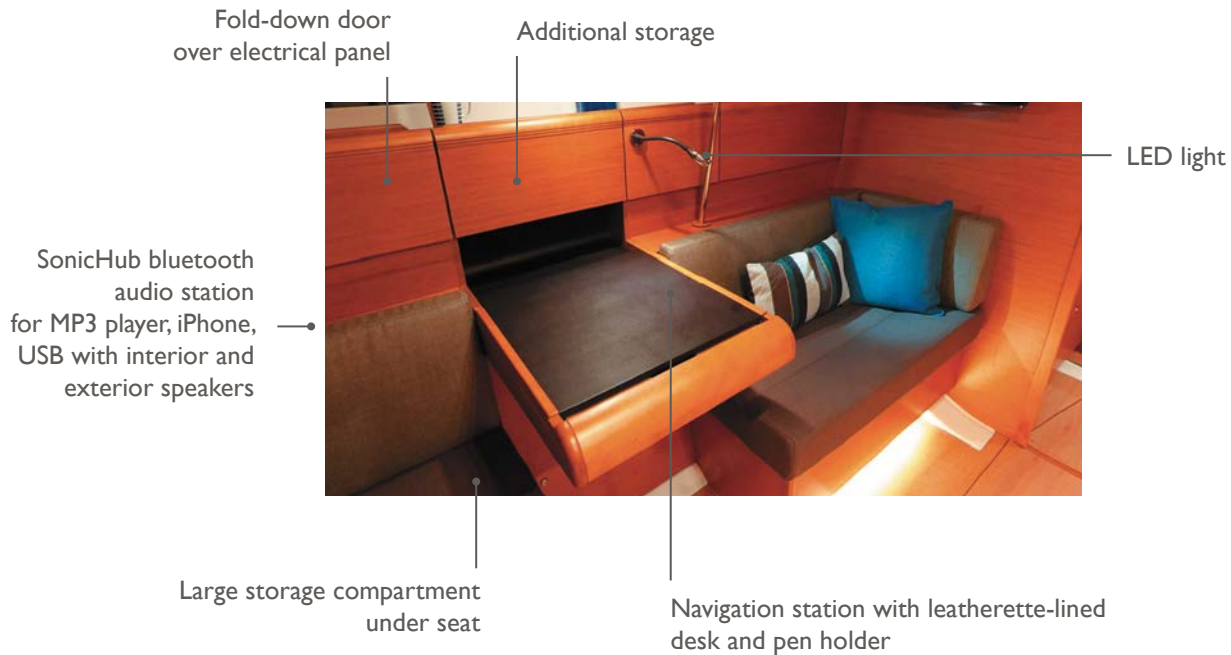
DELUXE SALOON TABLE

- 2 leaves in order to provide plenty of surface area
- Easily converted to a double berth
- Bar cabinet integrated into base
- Leather-wrapped handrail and central plateau



CHART TABLE

Designed for passagemaking



GALLEY

Drawers with soft-return latches



Lots of storage compartments and drawers



Glass splash guard protects seating area

Magazine/chart holder

Location of optional microwave

L galley includes double sinks in stainless steel, lots of counter space and a 185 L fridge compartment with 12v refrigeration

FORWARD CABIN - I forward cabin version

Large hanging locker with other storage compartments



Central Island berth

2 hull ports, 3 flush deck hatches for lots of light and ventilation



Storage shelves

Spacious head compartment with separate shower



Desk/vanity with leatherette-lined worktop



Ease access to the berth

FORWARD CABIN - 2 forward cabins version

2 hull ports and an opening deck hatch provide light and ventilation



V-berth

Hanging locker and storage shelves

Lateral cabin with bunk beds and hanging locker and an opening deck hatch



AFT CABIN - 2 aft cabins version

Spacious aft cabins, each with double berth and large hanging locker

Each aft cabin has 1 opening hatch, 1 opening port, 1 hull port and a curved plexi port for light and ventilation



Head compartment with fully separate shower compartment with plexiglass door and lots of storage

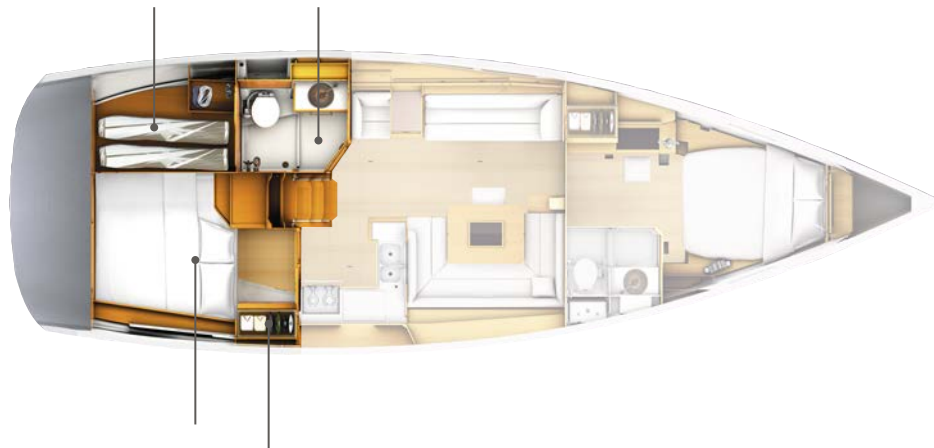


AFT CABIN : I aft cabin version



Storage locker accessible from the head compartment, with drawers and bins

Head compartment with fully separate shower compartment with plexiglass door (Trim level) and lots of storage



Aft cabin has 1 opening hatch, 1 opening port, 1 hull port and a curved plexi port for light and ventilation

Spacious aft cabin with large hanging locker

SAIL AND RIG PLANS: Sails for every sailor

Select the sail plan that best fits your style :

- **High aspect ratio rig** for maximum performance while limiting the loads on the sheets.
- Inboard shrouds allow better trim angle on the genoa and keeps the side decks clear
- Choice of self-tacking jib, Performance sails in Mylar/taffeta, fully-battened or furling mainsail...
- **Code 0** offered as an option for sailing in light wind conditions



SPECIFICATIONS

BATTENED MAINSAIL :

- Dacron®
- Horizontal panels
- Stainless steel eyes
- UV-stabilised thread
- Draft stripe
- Radial reinforcements
- Adjustable leech line
- Loose-footed
- 2 reef points each with singleline reefing system

• **Area : 49,5 m²**



SHORT OVERLAPPING FURLING GENOA (106%) :

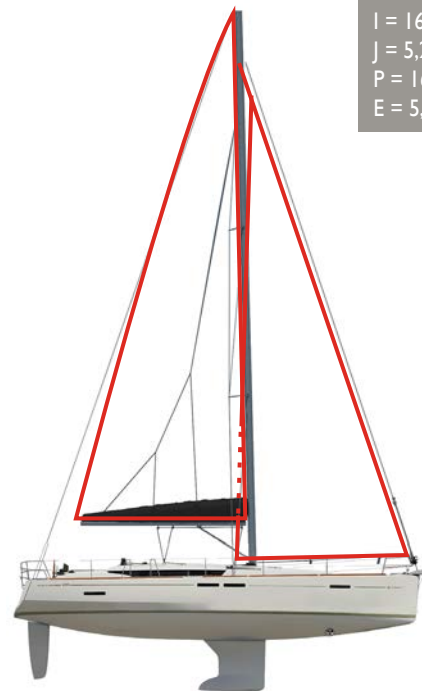
- Dacron®
- Horizontal panels
- UV-stabilised thread
- Webbing strap at head
- Bolt-rope for furler
- Anti-UV protection on foot and leech
- Draft stripe
- Webbing strap at tack
- Reefing marks
- Adjustable leech line
- Compatible with Smart Tacking

• **Area : 41,5 m²**



ADVANTAGES

- High-aspect rig for maximum performance
- Easy to handle sail plan
- Versatile and balanced sail plan at all sailing angles



I = 16,60 m / 54'5"
 J = 5,21 m / 17'1"
 P = 16,00 m / 52'5"
 E = 5,25 m / 17'2"

MAINSAILS

PERFORMANCE MAINSAIL : 49,5 m²



FURLING MAINSAIL : 39,3 m²



FORESAILS

**PERFORMANCE GENOA 106% :
41,5 m²**



SELF-TACKING JIB : 35,3 m²



**PERFORMANCE GENOA 140% :
54,7 m²**



CODE 0 : 76,4 m²

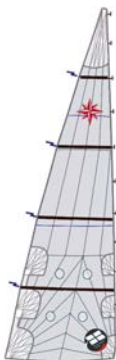


SPECIFICATIONS

BATTENED MAINSAIL

full-batten Performance :

- Triradial cut
- Mylar/taffeta X-Grid fabric in grey colour
- Stainless steel eyes
- UV-stabilised thread
- Draft stripe
- Radial reinforcements
- Adjustable leech line
- Loose-footed
- Fibreglass battens
- 2 reef points each with singleline reefing system
- Replaces the standard mainsail
- **Area : 49,5 m²**



ADVANTAGES

- High-end sail cloth material means less stretch and better performance
- Powerful sail plan in light winds
- Tri radial cut ensures better sail shape and improved resistance to wear.



PERFORMANCE SAILS : MYLAR TAFFETA X-GRID

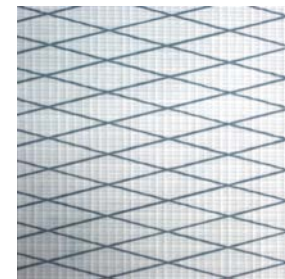
Working in collaboration with Dimension-Polyant and Technique Voiles, Jeanneau has developed a new Mylar Taffeta X-Grid fabric for the Performance range.

The triradial construction of the sail contributes to superior shape holding, but other forces can act on the individual panels. By using a specially-designed X-Grid[®] of fibres angled at 6° laminated into the fabric, better bias control can be achieved which makes the sail more resistant to deformation and aging.

The performance of these new fabrics provides a more stable sail cloth that is lighter, easier to handle, with better shape control over time.

These new Performance sails are easily recognisable; they include a taffeta laminate that is light grey that gives them a very “hi-tech” look.

- 1 - Protective taffeta
- 2 - Polyester film
- 3 - X-Grid[®] fibres
- 4 - Polyester scrim



SPECIFICATIONS

FURLING MAINSAIL :

- Dacron®
- Horizontal panels
- UV-stabilised thread
- Radial reinforcements
- Draft stripe
- Adjustable leech line
- UV protection on clew
- Replaces the standard mainsail
- Included in furling mast option
- **Area : 39,3 m²**



ADVANTAGES

- Easy handling
- Quick furling of the sail
- Easy reefing
- Same height as the classic mainsail
- Compatible with any of the foresail options



SPECIFICATIONS

FURLING GENOA

106% Performance :

- Mylar/taffeta X-Grid fabric in grey colour
- Triradial cut
- UV-stabilised thread
- Webbing strap at head
- Bolt-rope for furler
- Anti-UV protection on foot and leech
- Radial reinforcements
- Draft stripe
- Webbing strap at tack
- Reefing marks
- Adjustable leech line
- Replaces the standard genoa

• **Area : 41,5 m²**



ADVANTAGES

- High-end sail cloth material means less stretch and better performance
- Balanced sail plan for all sailing angles
- Easy to use in all conditions
- Compatible with Smart Tacking

PERFORMANCE SAILS : MYLAR TAFFETA X-GRID

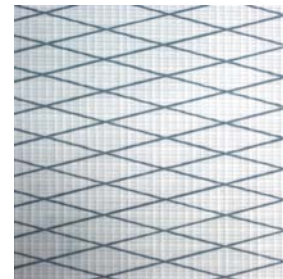
Working in collaboration with Dimension-Polyant and Technique Voiles, Jeanneau has developed a new Mylar Taffeta X-Grid fabric for the Performance range.

The triradial construction of the sail contributes to superior shape holding, but other forces can act on the individual panels. By using a specially-designed X-Grid[®] of fibres angled at 6° laminated into the fabric, better bias control can be achieved which makes the sail more resistant to deformation and aging.

The performance of these new fabrics provides a more stable sail cloth that is lighter, easier to handle, with better shape control over time.

These new Performance sails are easily recognisable; they include a taffeta laminate that is light grey that gives them a very “hi-tech” look.

- 1 - Protective taffeta
- 2 - Polyester film
- 3 - X-Grid[®] fibres
- 4 - Polyester scrim



SPECIFICATIONS

FURLING GENOA

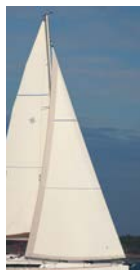
140% Performance :

- Mylar/taffeta X-Grid fabric in grey colour
- Triradial cut
- UV-stabilised thread
- Webbing strap at head
- Bolt-rope for furler
- Anti-UV protection on foot and leech
- Radial reinforcements
- Foam luff
- Draft stripe
- Webbing strap at tack
- Reefing marks
- Adjustable leech line
- Replaces the standard genoa
- Requires deck hardware for large overlapping genoa
- **Area : 54,7 m²**



ADVANTAGES

- High-end sail cloth material means less stretch and better performance
- Powerful sail plan in light winds
- Tri radial cut ensures better sail shape and improved resistance to wear.



PERFORMANCE SAILS : MYLAR TAFFETA X-GRID

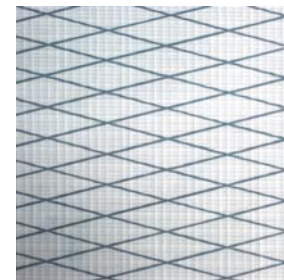
Working in collaboration with Dimension-Polyant and Technique Voiles, Jeanneau has developed a new Mylar Taffeta X-Grid fabric for the Performance range.

The triradial construction of the sail contributes to superior shape holding, but other forces can act on the individual panels. By using a specially-designed X-Grid[®] of fibres angled at 6° laminated into the fabric, better bias control can be achieved which makes the sail more resistant to deformation and aging.

The performance of these new fabrics provides a more stable sail cloth that is lighter, easier to handle, with better shape control over time.

These new Performance sails are easily recognisable; they include a taffeta laminate that is light grey that gives them a very “hi-tech” look.

- 1 - Protective taffeta
- 2 - Polyester film
- 3 - X-Grid[®] fibres
- 4 - Polyester scrim



SO439 - 07/2014

SPECIFICATIONS

SELF-TACKING FURLING JIB :

- Mylar/taffeta X-Grid fabric in grey colour
- Triradial cut
- UV-stabilised thread
- Webbing strap at head
- Bolt-rope for furler
- Anti-UV protection on foot and leech
- Draft stripe
- Radial reinforcements
- Webbing strap at tack
- Adjustable sheet attachment
- Adjustable leech line
- Replaces the standard genoa
- Requires deck hardware for self-tacking jib
- **Area : 35,3 m²**



ADVANTAGES

- Hands-free tacking
- Great up-wind performance
- Perfect for short-handed sailing

PERFORMANCE SAILS : MYLAR TAFFETA X-GRID

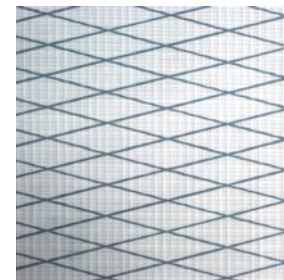
Working in collaboration with Dimension-Polyant and Technique Voiles, Jeanneau has developed a new Mylar Taffeta X-Grid fabric for the Performance range.

The triradial construction of the sail contributes to superior shape holding, but other forces can act on the individual panels. By using a specially-designed X-Grid[®] of fibres angled at 6° laminated into the fabric, better bias control can be achieved which makes the sail more resistant to deformation and aging.

The performance of these new fabrics provides a more stable sail cloth that is lighter, easier to handle, with better shape control over time.

These new Performance sails are easily recognisable; they include a taffeta laminate that is light grey that gives them a very “hi-tech” look.

- 1 - Protective taffeta
- 2 - Polyester film
- 3 - X-Grid[®] fibres
- 4 - Polyester scrim



SPECIFICATIONS

CODE 0

sur emmagasineur Selden :

- Laminate Mylar/Aramid X-Grid fabric in light grey
- Triradial cut
- Anti twist luff cord
- UV-stabilised thread
- Straps for sheet attachment
- Adjustable leech and foot lines
- Requires rigging for asymmetrical spinnaker / Code 0
- **Area : 76,4 m²**



ADVANTAGES

- A light wind sail designed for use between 60° and 120°
- Continue to sail when others have given up and turned on the motor
- Continuous line furler allows easy deployment and furling from the cockpit
- Ideal addition to boats with small overlapping jibs and self-tacking jibs



CODE 0: MYLAR ARAMID X-GRID

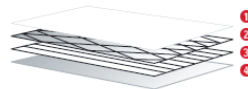
For the development of the new Code 0 sails on a continuous line furler, Jeanneau selected a sail cloth that is perfectly adapted for use in light airs. Highly resistant, light weight and able to be furled, the Mylar Aramid X-Grid has a light grey finish that is translucent.

Unidirectional Aramid fibres, vacuum-bagged together between two polyester films, provide an unequalled resistance to weight ratio. This ultra light sail is easy to handle and fills with the slightest puff of wind. Adding the X-Grid® polyester fibres at a 6° angle provides excellent bias control in all directions and improves sail shaping, as well as, resistance to tearing.

Lastly, a taffeta is added to the external laminate of the sail cloth to protect the sail from ultraviolet light and wear during furling or storage.

The Code 0 sails from Jeanneau integrate these high-performance materials to meet the exacting demands of our owners. In addition to these high-end materials, the look of these sails sets Jeanneau apart.

- 1 - Polyester film
- 2 - X-Grid® fibres
- 3 - Unidirectional Aramid fibres
- 4 - Protective taffeta



SO439 - 07/2014

PRISMA PROCESS



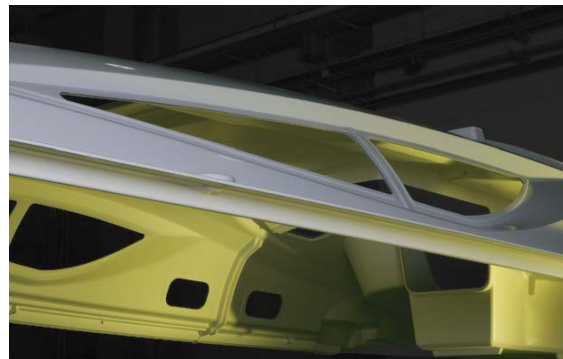
Leader in vacuum bagging technology for the construction of racing boats, JTA developed an resin injection process applicable to the construction of cruising boats. By using advanced engineering, precisely positioned layers of glass fabric and mat and specially developed core materials, Jeanneau is able to mould a deck to exacting tolerances.

Jeanneau's leadership in this domain gives it a substantial advantage over its competitors and ensures unequalled quality to the customer.

This 21st century technology allows Jeanneau to manufacture complex fibreglass parts with:

- Perfect finish on both sides (no need for a counter mould)
- Reduced weight (providing the sailboat better stability/performance)
- Increased strength and rigidity of the piece (quality of lay-up)
- Reduction by 90% of VOC emissions (environmentally-friendly)
- Optimum working conditions for the production team (no contact with resins/catalysts)
- High quality parts (precise control of gelcoat, core materials and resin injection)

The deck of the Jeanneau 53 is the largest mass-produced injection fibreglass part in the world.

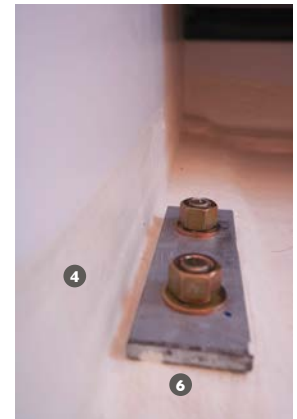


COUNTER-MOULDING

3rd generation hull structure

Jeanneau has long been known for strong and seaworthy boats. Today the technology of boatbuilding has evolved, but our commitment to this tradition has not wavered. The Jeanneau 3rd Generation Hull Structure combines the latest in fiberglass technology with modern yacht design to deliver a structural reinforcement perfectly adapted to the demands of the offshore sailor.

- ❶ High-load zones cut-out for access to the hull
- ❷ Integrated repair area at aft end of keel
- ❸ Structure is precisely placed in the hull
- ❹ Glued and relaminated to the hull for strength
- ❺ Acts as a support for the floorboards
- ❻ Keel bolts located near vertical members and through counter mould and hull
- ❼ Limber holes at hull level for efficient drainage
- ❽ Counter mould remains below level of floorboards and is not visible



ALPI WOOD - FINETEAKE

SALES POINTS:

Environmental:

- Ayous (Triplochiton scleroxylon - Sterculiacées) trees in managed forests of indigenous hardwoods are selected and cut, with a constant care given towards long term preservation of natural resources.
- Teak and other soft rainforest woods often come from geopolitically sensitive regions and are not managed in a sustainable way.

Quality:

- These ALPI wood panels are substantially more expensive and reliable than standard marine plywood. They are used by top of the line furniture manufacturers, as well as many exclusive super-yacht builders (for example Azimut and Ferretti only use ALPI wood).
- Consistency of finish and colors throughout the boat.
- Elimination of “defects” in wood panels.

Durability:

- Harder finish that is more resistant to humidity
- Better resistance to UV
- Easier repairs as veneer is tinted through and through so clear varnishes can be used



Ambiance "WHITE GOLD"

SALOON



UPHOLSTERY leather/
leatherette ▶ *Chocolat*



FLOOR
▶ *Std: Light oak laminate*



▶ *Option:*
Laminate teak



BACKRESTS & SEATS

▶ *White Gold*

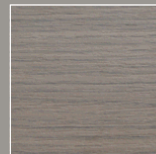


CURTAINS

▶ *Magnifico Pewter*



▶ *Option :*
Dark oak laminate



Infill cushion for convertible berth in White Gold

CABINS

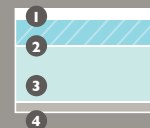
SEATS

▶ *PVC Mediterraneo*
Old White



BEDS

▶ *Premium mattress*



- 1- Removable mattress cover fabric with Ultra-Fresh® is anti-microbial, anti-bacterial and non-allergenic
- 2- Top: 40mm of High-Resilience foam
- 3- Base: 80mm of high-density polyether foam
- 4- Breathable fabric

Ambiance «MEDITERRANEO»

SALOON



BACKRESTS & SEATS

▶ *PVC Mediterraneo Old White*



CURTAINS

▶ *Magnifico Pewter*



UPHOLSTERY *leather/leatherette* ▶ *Chocolat*



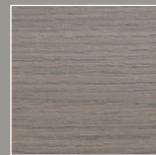
FLOOR ▶ *Std: Light oak laminate*



▶ *Option: Laminate teak*



▶ *Option: Dark oak laminate*



Infill cushion for convertible berth in White Gold

CABINS

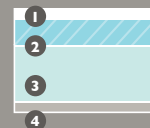
SEATS

▶ *PVC Mediterraneo Old White*



BEDS

▶ *Premium mattress*



- 1- Removable mattress cover fabric with Ultra-Fresh® is anti-microbial, anti-bacterial and non-allergenic
- 2- Top: 40mm of High-Resilience foam
- 3- Base: 80mm of high-density polyether foam
- 4- Breathable fabric

Ambiance "LOFT"

SALOON



UPHOLSTERY
leather / leatherette
▶ Chocolat

FLOOR
▶ Std: Light oak laminate
▶ Option: Laminate teak
▶ Option : Dark oak laminate

BACKRESTS
▶ Mega chinchilla

SEATS
▶ Tudor graphite

CURTAINS
▶ Magnifico Pewter



Infill cushion for convertible berth in White Gold

CABINS

SEATS
▶ PVC Mediterraneo Old White



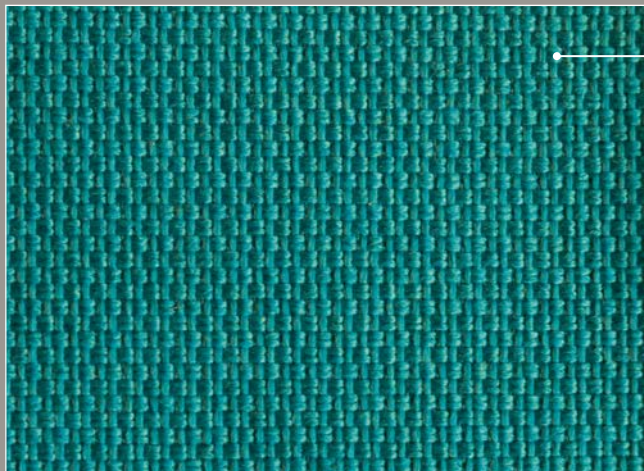
BEDS
▶ Premium mattress



- 1- Removable mattress cover fabric with Ultra-Fresh® is anti-microbial, anti-bacterial and non-allergenic
- 2- Top: 40mm of High-Resilience foam
- 3- Base: 80mm of high-density polyether foam
- 4- Breathable fabric

Ambiance "LAPIS"

SALOON



BACKRESTS & SEATS

▶ *Trojan Lapis*

CURTAINS

▶ *Magnifico Pewter*



UPHOLSTERYleather/
leatherette ▶ *Chocolat*



FLOOR
▶ *Std: Light oak laminate*



▶ *Option:*
laminat teak



▶ *Option :*
Dark oak laminate



Infill cushion for convertible berth in White Gold

CABINS

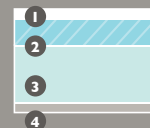
SEATS

▶ *PVC Mediterraneo
Old White*



BEDS

▶ *Premium mattress*



- 1- Removable mattress cover fabric with Ultra-Fresh® is anti-microbial, anti-bacterial and non-allergenic
- 2- Top: 40mm of High-Resilience foam
- 3- Base: 80mm of high-density polyether foam
- 4- Breathable fabric

EXTERIOR UPHOLSTERY

SPRAYHOOD PROTECTION BIMINI / LAZY BAG



► Sunbrella taupe



COCKPIT CUSHIONS



► Sunbrella sling taupe





TRIM LEVEL PREMIERE

SonicHub
 Simrad product codes: Amplifier: 000-11206-001
 Remote: 000-10561-001
 Bluetooth module: 000-11207-001
 USB plug: 000-11211-001



ELECTRONIC PACK

T41 Triton
 • Displays position, lock, speed, heading, depth, temperature, wind and pilot
 B&G product code: 000-10607-001



508 Wind Sensor
 B&G product code: 000-10570-001



DTS800 Speed/Depth/Temp Transducer
 B&G product code: 22098552



OPTIONAL WIFI

WiFi-1: Wireless Module
 • Free "GoFree" application to view/control the MFD available from web
 Navico product code: 000-11068-001



OPTIONAL REMOTE

WR20 Autopilot Wireless Remote
 Simrad product code: WR20



OPTIONAL BROADBAND

Broadband Radar 4G
 B&G product code: 000-10423-001



OPTIONAL MFD COCKPIT (IN POD)

Zeus® 9" wide
 • 9" LED Multifunction display
 • Navionics regional cartography included (on SDcard)
 • Integrated Pilot control (optional)
 B&G product code: 000-11189-001



OPTIONAL VHF/AIS CHART TABLE

V50 AIS Radio
 B&G product code: 000-11236-001

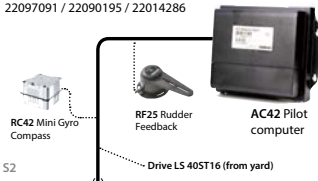


OPTIONAL AUTOPILOT STARBOARD

Triton Pilot Controller
 B&G product code: 000-10611-001



Autopilot System
 B&G product codes: 22097091 / 22090195 / 22014286



OPTIONS



