

Technical Data 06/90

Specifications

Length over all	: 11,00 m (36' 2")
Hull length	: 10,80 m (35' 6")
Length on waterline	: 9,20 m (30' 2")
Maximum beam	: 3,80 m (12' 6")
Displacement approx.	: 5700 kg (12566 lbs)
Draft deep	: 2,03 m (6' 8")
Draft shallow	: 1,48 m (4' 10")
Ballast approx.	: 1900 kg (4189 lbs)
Cabins	: 3
Berths	: 6 / 8
Washrooms	: 2
Homologation Class 1	: 89/10
Sail area	: 70 m ² (753 sq. ft.)
Main	: 30 m ² (323 sq. ft.)
Cannon (optional)	: 40 m ² (433 sq. ft.)
Spinnaker (asymmetrical)	: 100 m ² (1083 sq.ft.)

Concept / Deck / Accommodation : J & J
 Hull lines, appendages, sail system : Daniel ANDRIEU
 Decoration : Olivier LAPOURCADE
 Coordinated by Andrew Winch Designs



Construction

Hull 1 is a one piece hand-laminated Kevlar (R) Aramid 9035 K fibreglass reinforced polyester laminate.

The upper part of the keel is a recessed polyester bilge in the hull bottom.

The laminated internal framing glassed to the hull spread stress throughout the hull bottom.

Keel 2 is a 1900kg (4200 lb) piece of cast-iron. It has a NACA semi-elliptical profile. It is bolted to the hull using 11 bolts which are then glassed in.

Deck 3 is made using GRP laminate and bulk sandwich construction. Hardwood inlays are located at all points where deck fittings are mounted.

The hull-deck joint is chemically bonded and additionally through-bolted to the aluminium rubbing strake.

Rudder 4 is in GRP with laminate over a stainless-steel grid welded to the stock. 3 fitting points.

Rudder tube with bushes laminated to the hull and deck, bottom bearing on the keel.

The steering system by direct transmission.

Deck fittings

Toe rail with rubbing strake

Split pulpit forward with teak step

2-colour navigation lights

8 tapered stainless steel stanchions (61 cm/2')

Double lifelines of PVC-sheathed stainless steel wire with turnbuckles and insulated connectors

Split aft pulpit double lifelines

Stainless steel handrail fitting

Provision of a permanent position for a (15 to 20 kilogram) BRUCE or QR anchor

An integrated mooring system with 2 pivoting bow-rollers, chain guard and stem protection

Self-draining anchor locker

Manual anchor winch

6 light-colour mooring cleats with incorporated roller fairleads

2 genoa furling rope-rides on the front of the coachroof

Large flat sunbathing platform with provision for mattress attachment

1 winchbitch on the deck hatch

Water-tight gland for passage of anchor light and mooring light, deck headlight

2 triple deck lead blocks

4 double deck lead blocks

4 fixed percholas on coachroof side

4 opening percholas in hull side

Opening hatch over saloon

2 fixed hatches over mid-part of saloon

Translucent sliding main hatch

Companionway hatch with lock and handle attachment each side of the coachroof

2 teak grabrails on the sides

Grabrails on the coachroof

2 genoa tracks with travellers

2 turning blocks for genoa clew adjustment under tension

Turning block with stopper for genoa sheet

Turning block with adjustment for genoa traveller

A pair of 2-speed self-tailing winches

2 winch handles

Winch handle bin next to the companionway

2 double ball-and-socket stoppers releasable under tension (load)

Fixed hatch over both aft hatches

Meshsheet track with adjustable traveller over companionway

Deck fill cover WATER (Blue)

2 opening percholas to aft cabins each side of cockpit

2 opening percholas to aft cabins each side of hull

2 opening percholas to aft cabins each side of the companionway

Cockpit and speaker are both teak-barrered

Ergonomically-shaped cockpit

Sail storage lockers have lockable covers and can be blocked in open position

Pedestal with compass (illuminated) and stainless steel guard

Steering wheel diam.: 1100 cm/3' 3"

Manual bilge pump

2 champagne flutes for spinnaker sheet turning blocks

Separate storage to house gas bottles

Storage for 6-person liferaft beneath the belmast

Hatch on platform swings up to provide easy slipping of the raft into the water

Shower facility and swim ladder built into transom extension

Stern light

Wrap-around rubbing strake affords total protection of the yacht and stern section

Stern roller and cleat for aft mooring

Vents for of engine compartment

Flange socket and fibreglass on aft pulpit

Mast, standing rigging

Mast, anodized aluminium extension:

- 2 levels of spreaders

- Mast base with turning blocks

- 2 self-tailing winches

- 4 clew-cleats

- 4 clews

- Winch handle bin

- Spinnaker pole track, traveller with bell-fitting and control-line with cleats

- Upper clamp-fitting provides station for spinnaker pole

Anodized boom:

- 4 stoppers for jiffy reefing

- 2 feet and four outhaul

Boom vang with block purchase

Standing rigging of stainless steel with turnbuckles

- Forestay (furling genoa)

- Backstay with handle

- Cap (upper) shrouds

- Intermediate shrouds

- All lower shrouds

- 2 forward lower shrouds

Running rigging

1 Main halyard

1 Mainsheet with turning blocks

1 genoa halyard

2 genoa sheets

Trawler tag-line

Sails

Roller genoa

Standard main

Sail bags

Accommodation

The interior joinery is of teak and ash

All portholes, hatches and roof screens are fitted with curtains/drapes or blinds

Forward cabin

Large double berth 1.56 m x 1.90 m (5' 1" x 6' 3")

Mattresses (foam - 112 cm/5") with removable covers

Vents for of engine

Hull side lining with foam-support backing

Washbasin with pressurized fresh-water tap/water

Storage locker under the washbasin with access to cockpit

Hanging locker to starboard with swing-out door

Down reefing light and recessed neon lighting under the storage shelves

Opening deck hatch with ventilator

Headroom: 1.88 m (6' 2")

Saloon

Exponentially-shaped settee seating 8 round the table

Seat cushions and backrests (112 cm/5" - foam) with removable covers

Diesel tank (150 US imp.gallons / 59.63 US gallons) beneath forward part of saloon settee

Mast pillar located aft of the forward bulkhead

Saloon table (1.57 x 0.70 m/4' 6" x 2' 3") converts to a double berth

Bar unit along the forward cabin bulkhead

Storage shelves behind the saloon settee backrests

Storage locker unit with door facing the galley and located in the

lower section of the front part of the saloon

2 down reefing lights over the saloon table

Recessed area lighting under the grabrails

Opening porthole hatch to starboard

Opening hatch in the coachroof over the saloon

2 fixed, deck lights, roof lights

The engine is situated beneath the central part of the settee and is very accessible

Access to the stuffing box through the sole

Headroom: 1.90 m (6' 3")

Galley

Galley work surface of laminate material with wrap-around fiddle

Double sink (0.30 x 0.35 m and 0.24 x 0.35 m

1.2" x 14" and 6" x 14")

Pressurized fresh water tap

Sea water by foot pump

Bronze searchers under the sink (sink and forward cabin washbasin discharge outlets)

A number of storage lockers are located beneath the galley with shelf and waste-bin

2-burner safety gas stove mounted on gimbals with horizontal position lock and gas shut-off cock behind

Retaining strap

Swing-down section gives extra work surface over gas stove

100-litre (3.5 cu. ft.)

Refrigerator with self dividers and direct drainage down into bilge well

Storage shelf behind gas stove

Crockery storage unit with adjustable shelving stools

Storage unit with shelf and crockery storage

Lighting through roof portlight (bellied stove)

Opening porthole

Crumbs-tray in sole

Deck fittings

1 Sternboard fitting (upper section of aluminium, lower section with stem guard of stainless steel, anchor and chain guide built into the stem)

2 Split forward pulpit with bow lights

3 Forward mooring cleat

4 Opening porthole to forward cabin with through ventilator

5 Mast base with return blocks

6 Stainless steel champagne

7 Deck lead blocks

8 Coachroof grabrail

9 Mooring cleat

10 Main traveller

11 Genoa sheet return block with jammer

12 Cleat

13 Teak-sail

14 Steering wheel

15 Aft mooring cleat

16 Backstay champagne

17 Cleat for aft mooring

18 Stern roller for aft mooring

19 Anchor locker with mechanical windlass (the anchor remains at station beneath the sternboard fitting)

20 Mechanical windlass

21 Eyelet

22 Stainless steel sternboard champagne

23 Deck lead block

24 Genoa sheet track

25 Hull deck fill cover

26 Double jammer

27 Cleat

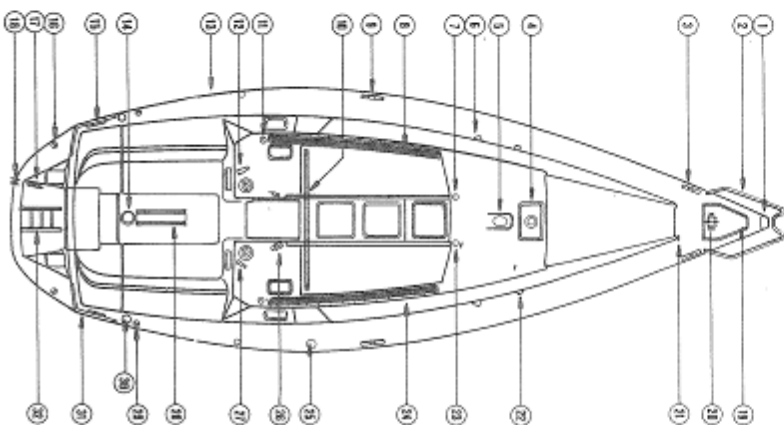
28 Cockpit table (optional extra)

29 Spinnaker sheet champagne

30 Water deck fill cover

31 Aft pulpit

32 Teak-barrered aft speaker with beading ladder



Inspection hatch into bilge well and to the bilge pump
 Recessed neon lighting under the grabrails
 Lifting from fluorescent tube under the slide-deck
 12-volt power socket
 Headroom : 1,90 m (6' 3")

Navigation area

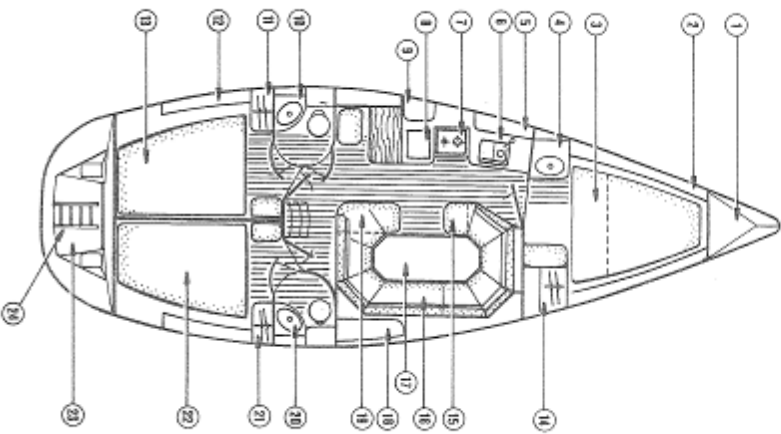
Chart table, with desk lid for chart storage 0,74 x 0,54 m
 (2' 5" x 1' 9")
 Raised-position lock
 The electric panel and the instrumentation panel are ergonomically located forward of the navigator facilitating use
 The panel is mounted on a hinged door for easy access
 Instrument housing panel in front of the chart table
 Chart reading light
 Navigator seat with removable vinyl-covered foam seat cushion
 The storage locker beneath this seat houses the refrigeration unit, the water-pressure unit with expansion chamber, and the bilge pump
 Lateral bunkbedsliding

Companionway

Teak steps with non-slip surface
 Companionway slides are made of a melamine material for ease of cleaning
 2 vertical grabrails
 Battery cut-out under the companionway

Symmetrical aft cabins

Door giving access to saloon
 Door giving direct access to the washroom



Hanging locker

Double berth 1,95 m x 1,48 m (6' 5" x 4' 10")
 Double drawer 12 cm/5" - thick foam mattress
 Storage area with the berth
 Water tank (153 l/40,7 imp. gal/16,8 US gal)
 Dome ceiling light
 Recessed neon lighting beneath the storage shelf
 Opening porthole in aft of roof side (into cockpit)
 Opening porthole
 Opening portlight into cockpit
 Hull and head lining : light-coloured reynofr fabric
 Storage unit
 Teak sole
 Headroom : 1,90 m (6' 3")

Symmetrical aft washrooms

Marine WC with pump and cocks
 Washbasin with pressurised water supply
 Shower with hose
 Mirror and washroom fittings
 Storage area above WC and washbasin
 12-volt power socket
 Dome ceiling light
 Recessed neon lighting each side of the unit
 Fixed deck light
 Opening companionway light
 GRP inner liner for drainage of shower waste water
 Electrical discharge pump
 Door giving direct access to saloon (portside only)
 Headroom : 1,89 m (6' 2")

Accommodation

- Self-dredging anchor well. The anchor remains at station and is graked into the stainless steel stem guard
- Forward cabin storage shelf
- Forward cabin with double berth (location of optional extra water tank)
- Washbasin
- Galley storage unit
- Double sink
- Gas stove
- Refrigerator
- Storage locker
- Aft washroom portside
- Aft cabin hanging locker
- Aft cabin storage shelf
- Aft cabin double berth
- Hanging locker with a seat on starboard
- Storage unit
- Saloon
- Saloon cable convertible to double saloon berth
- Storage shelf
- Enging housing
- Aft washroom to starboard
- Hanging locker
- Double aft cabin
- Teak finished platform
- Bathing ladder

Engine

Diesel engine (refer to price-list) located under the saloon settee
 Cooling by heat exchanger
 The engine compartment is separated from the rest of the bilge
 Water intake seacock with filter
 Shaft with stuffing box
 Two-bladed propeller
 Alternator 12 V/55 Ah
 Engine compartment is soundproofed using foam
 Access to engine by easy total dismantling of chest sides supporting the saloon settee
 Electric ventilation via a ventilation conduit
 Fuel tank under saloon settee (150 l/35 imp. gal/39,6 US gal)
 Engine control panel located in the cockpit to starboard with a translucent screen panel (depending on engine version)
 The control panel comprises :

- key ignition (overvoltage-resistant type)
- mechanical stopper control below the companionway
- Rev. limiter
- engine hour log on navigation station
- oil pressure warning indicator
- water temperature warning indicator
- battery-charge voltmeter
- fuel gauge at chart table
- Single-lever remote controls covering forward/reverse stop on steering pedestal

Water systems - Plumbing

All through-hull fittings are made of bronze with half-turn lever seacocks
 2 rigid water tanks, each : 185 l/40,7 imp.gal/48 US gal
 The tanks have inspection covers and overflow vents to hull side
 Both aft tanks are filled through a single deck fill cover
 Pressurised cold water supply to all tapfaucets (washrooms, galley and forward cabin)
 Water-pressure unit located under navigator seat
 All water supply lines are fitted with seacocks
 The bilge is divided into 3 parts :

- the main bilge over the keel ;
 - located under the saloon, it takes the water coming from the sole, washroom, as well as water coming from the engine shaft stuffing box. It is emptied by an electric bilge pump;
 - The mechanical high-capacity back-up pump is to be found in the cockpit and has a discharge in the hull side
 It is completely separate from the other bilges, gathering fuel residue or oil
 - The shower water bilge ;
 - Colbers the waste water from both aft washrooms and is emptied using an electric bilge pump equipped with a filter located under the navigator seat. The switches controlling this pump are in the cabins.
- All main floor members have drain holes for water drainage
 Water consumption meter on electric panel

Electrics

- 2 batteries 70 Ah
- 3 circuit circuits for inboard and engine circuits
- Alternator 55 Ah

The electric panel comprises :

- 20 circuit main switches for each electrical function
- 4 navigation lights, 4 service (refrigeration unit and 3 various), 4 for electronic instrumentation)
- 12-volt circuit ammeter
- 12-volt voltmeter
- water consumption meter
- 3 interior lighting
- 1 power socket
- 4 pumps (bilge, water unit, 2 various)
- Fuel gauge
- Compass on steering pedestal
- 3 recessed neon lights
- 6 recessed dome lights
- 1 fluorescent tube
- 1 chart reading spotlight
- 12-volt power socket
- Navigation lights
- 2-colour bow light on forward pulpit
- anchor light
- monitoring light with mast-mounted deck floodlight
- stern light
- Ignition key with supply for starter
- Bilge pump switches

Gas system

Wearlight gas locker with gas-scope vent
 Regulator
 Gas shut-off cock
 The gas-sense burners have automatic shut-off switches

Safety

Emergency (back-up) tiller made of hot-galvanized steel

Various

An owner's manual comprising :

- general information and technical data on the yacht
- instructions for use covering the equipment supplied
- handy sailing hints
- list of optional extra equipment and fitting notes
- advice on servicing and wintering
- yacht maintenance
- safety features
- an introduction to Jeanneau boatbuilders
- the Jeanneau dealer network

The owner's manual is also available on video-cassette and covers the same subject areas. Available in PAL or SECAM colour standards.

Optional extras

Teak side-decks
 Water-heater and 220-volt power socket
 140 litre water tank (30,79 imp.gal/36,98 US gal)
 Cockpit table
 Electric window
 Sunbathing mattresses
 Battery charger
 Safety fittings
 Emergency tiller made of galvanized steel

Jeanneau recommends **MOTUL**

