

Sun Odyssey

449



S U M M A R Y

- > SPECIFICATIONS
- > KEY POINTS
- > EXTERIOR
- > INTERIOR
- > SAILS
- > CONSTRUCTION
- > UPHOLSTERY
- > VINYL HULL WRAP
- > ELECTRONIC PACKAGES



JEANNEAU



TECHNICAL INFORMATION

Overall length with bowsprit: 13,76 m / 45' 1"
 Overall length: 13,34 m / 43' 9"
 Hull length: 12,99 m / 42' 7"
 Waterline length: 12,00 m / 39' 4"
 Beam: 4,24 m / 13' 10"

Displacement: 9.640 kg / 21.253 lbs
 Standard keel draft: 2,20 m / 7' 2"
 Shoal draft: 1,60 m / 5' 2"

Cabins: 2 / 3 / 4
 Berths: 4 / 6 / 8 (+2)

Engine power: Yanmar 57 Hp / 40 kW
 Fuel capacity: 200 l / 53 US gal
 Water capacity: 330 l / 87 US gal
 Cold capacity: 185 l / 49 US gal

Sail area:
 - Standard 91 m² / 979 Sq ft

CE Category: A10 / B11 / C12
 Designers: Philippe Briand - Jeanneau Design

VERSIONS • LAYOUTS

Fixed keel version
 Shoal draft version

2 cabins / 2 heads
 3 cabins / 2 heads
 4 cabins / 2 heads

Interior woodwork in Teak or Light Oak

EXTERIOR

Innovative deck plan and sleek styling:

- Mainsheet led back to each helm: integrated lines make for a clean and safe deck layout
- Flush hatches
- Easy access to the sea via a fold-down transom

Completely re-designed sail plan choices can be ordered “à la carte” :

- Furling mainsail
- Performance mainsail
- 106% performance jib
- 140% performance genoa
- Self-tacking jib
- Code 0



INTERIOR

Interior design focused on volume

- Spacious saloon set off by indirect LED lighting
- Vast forward cabin with central island berth with desk and spacious forward head compartment
- Lots of light and ventilation from 8 hull ports and plenty of flush hatches and ports
- Forward visibility

> Optimised layouts:

- 4 cabin layout
- Each head compartment has a separate shower
- Lots of possibilities for personalisation (choice of flooring, fabrics and options)
- Choice of woodwork : Teak or Light Oak



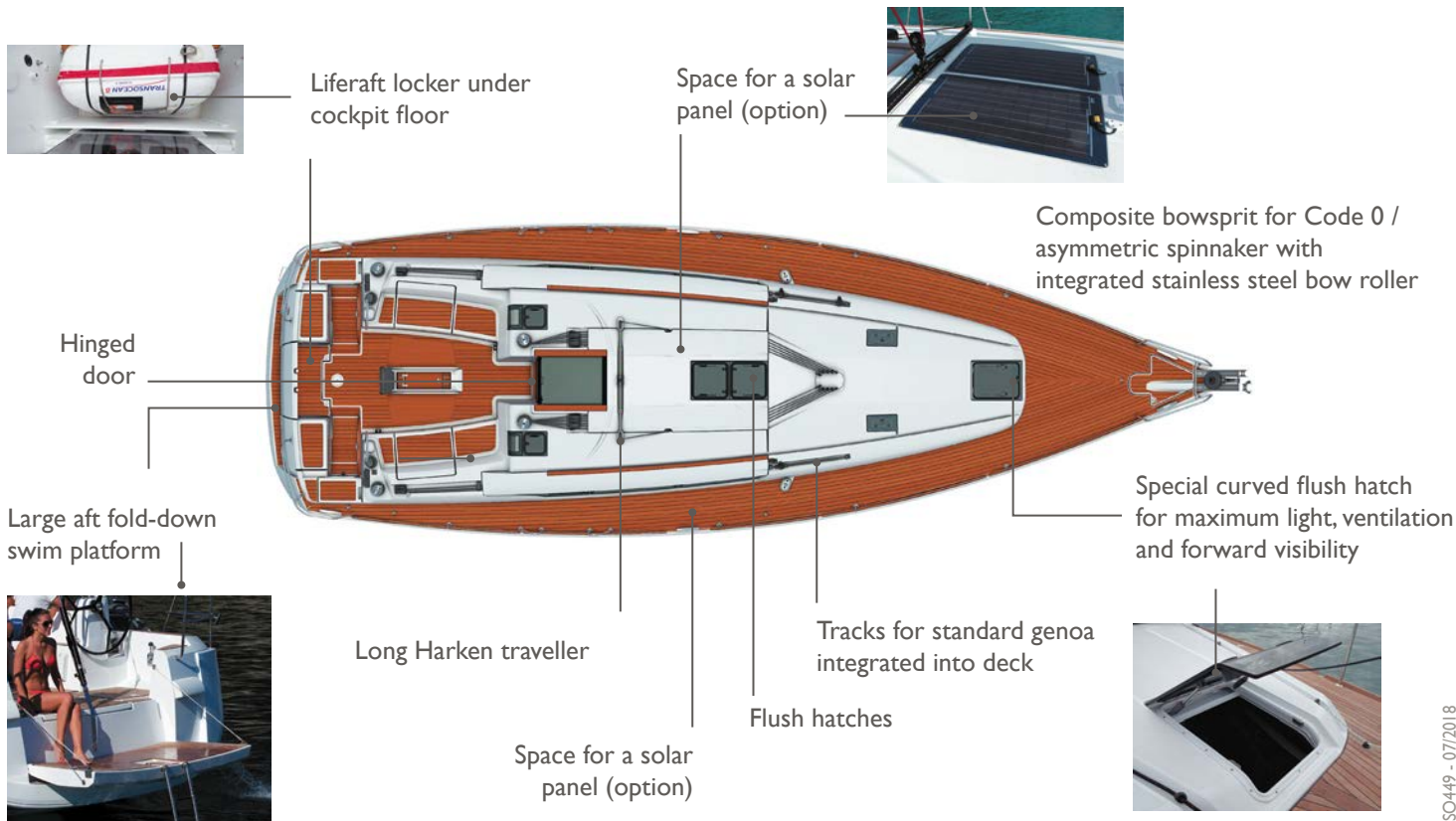
Teak



Light Oak

- Plenty of standard equipment (windlass, shorepower, etc...)

DECK



Liferaft locker under cockpit floor



Space for a solar panel (option)

Composite bowsprit for Code 0 / asymmetric spinnaker with integrated stainless steel bow roller

Hinged door

Large aft fold-down swim platform



Long Harken traveller

Tracks for standard genoa integrated into deck

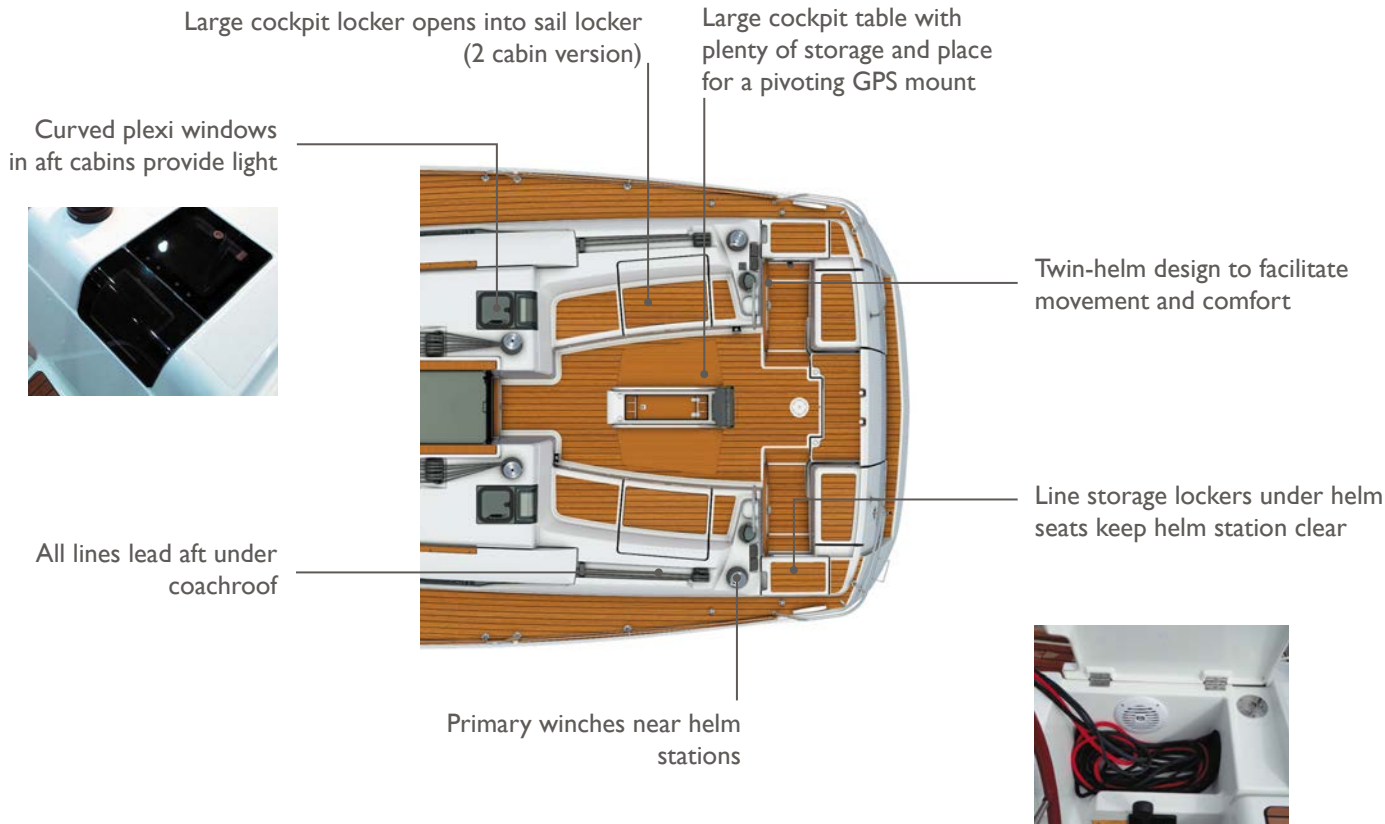
Special curved flush hatch for maximum light, ventilation and forward visibility

Flush hatches

Space for a solar panel (option)



DECK (continued)



A TRULY MULTIPURPOSE BOWSPRIT

Better look:

- Modern and elegant
- Sculpted fiberglass part flows into hull lines



Better anchoring:

- Stainless steel anchor fitting is positioned further from the bow to ensure more clearance
- Anchor roller is closer to the centerline for easier anchoring and retrieval and less hunting when at anchor
- Fixed, metallic bobstay protects the bow and stays out of the way when anchoring

Better sailing:

- 1 - Reinforced attachment point for Code 0
- 2 - Additional tack point attachment at the end of the bowsprit for larger asymmetric spinnakers



INTERIOR LAYOUTS

2 cabins version / 2 heads



3 cabins version / 2 heads



4 cabins version / 2 heads



SALOON - GALLEY

Long saloon with L galley with a return that makes it safe and easy to use even when underway



Gentle companionway, and large engine compartment with highend insulation and numerous access panels



Upgrade table (option) with large surface, integrated bar transformable into double berth

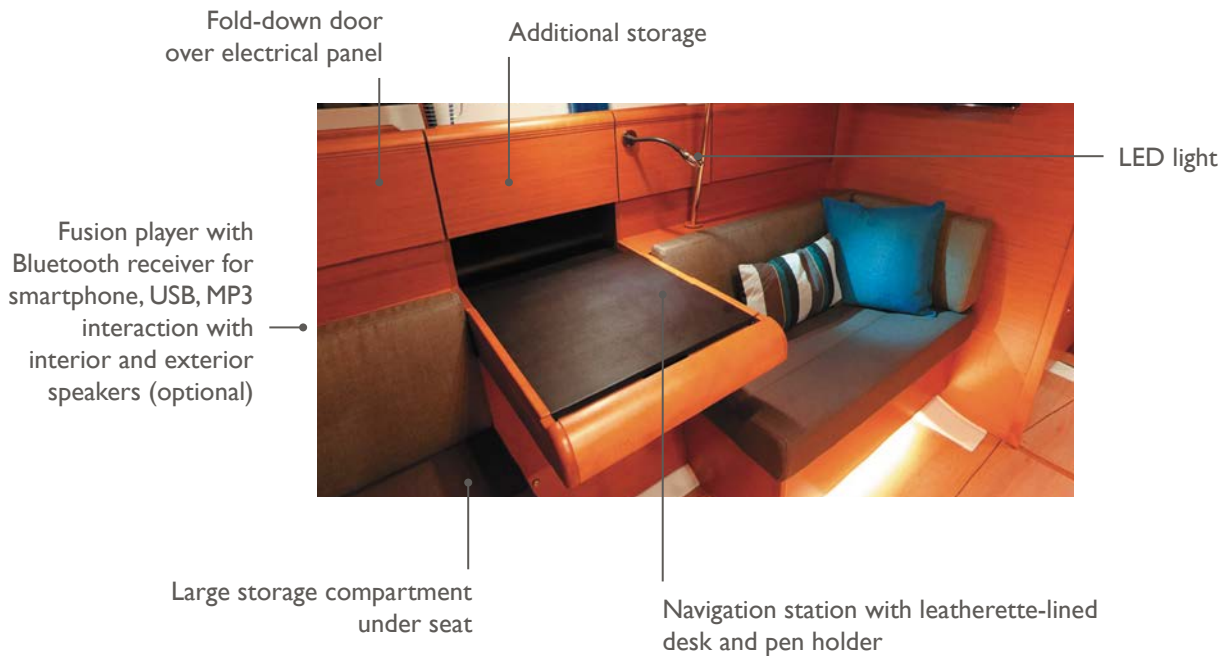
DELUXE SALOON TABLE

- 2 leaves in order to provide plenty of surface area
- Easily converted to a double berth
- Bar cabinet integrated into base
- Leather-wrapped handrail and central plateau



CHART TABLE

Designed for passagemaking



GALLEY

Drawers with soft-return latches



Lots of storage compartments and drawers



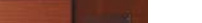
Glass splash guard protects seating area



Magazine/chart holder



Location of optional microwave



L galley includes double sinks in stainless steel, lots of counter space and a 185 L fridge compartment with 12v refrigeration

FORWARD CABIN - I forward cabin version

Large hanging locker with other storage compartments



Desk/vanity with leatherette-lined worktop



SO449 - 07/2018

FORWARD CABIN - 2 forward cabins version

2 hull ports and an opening deck hatch provide light and ventilation



V-berth

Hanging locker and storage shelves

Lateral cabin with bunk beds and hanging locker and an opening deck hatch



Indirect LED in each cabin

AFT CABIN - 2 aft cabins version

Spacious aft cabins, each with double berth and large hanging locker

Each aft cabin has 1 opening hatch, 1 opening port, 1 hull port and a curved plexi port for light and ventilation



Indirect LED in each cabin

Head compartment with fully separate shower compartment with plexiglass door and lots of storage

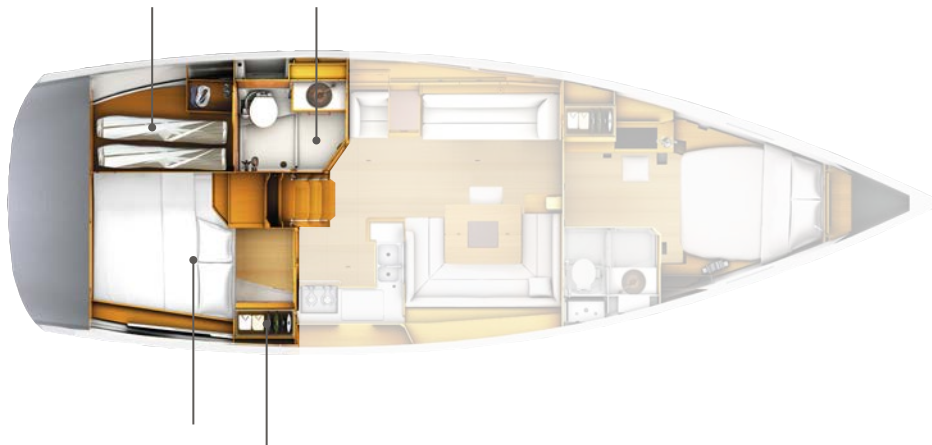


AFT CABIN : I aft cabin version



Storage locker accessible from the head compartment, with drawers and bins

Head compartment with fully separate shower compartment with plexiglass door (Trim level) and lots of storage



Aft cabin has 1 opening hatch, 1 opening port, 1 hull port and a curved plexi port for light and ventilation

Spacious aft cabin with large hanging locker

SAIL AND RIG PLANS: Sails for every sailor

Select the sail plan that best fits your style :

- **High aspect ratio rig** for maximum performance while limiting the loads on the sheets.
- Inboard shrouds allow better trim angle on the genoa and keeps the side decks clear
- Choice of self-tacking jib, Performance sails in Mylar/taffeta, fully-battened or furling mainsail...
- **Code 0** offered as an option for sailing in light wind conditions



SPECIFICATIONS

BATTENED MAINSAIL :

- Dacron®
- Horizontal panels
- Stainless steel eyes
- UV-stabilised thread
- Draft stripe
- Radial reinforcements
- Adjustable leech line
- Loose-footed
- 2 reef points each with singleline reefing system

• **Area : 49,5 m²**



SHORT OVERLAPPING FURLING GENOA (106%) :

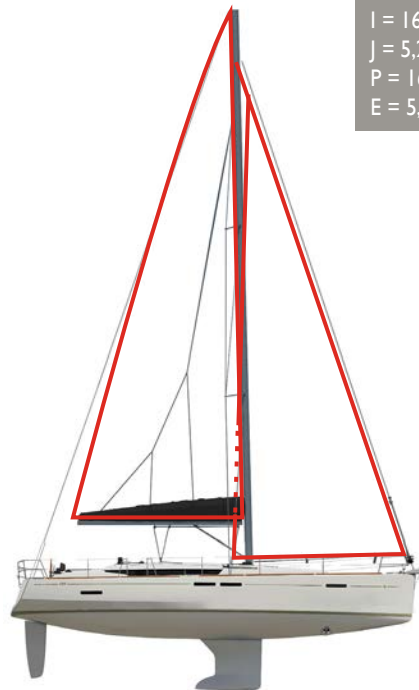
- Dacron®
- Horizontal panels
- UV-stabilised thread
- Webbing strap at head
- Bolt-rope for furler
- Anti-UV protection on foot and leech
- Draft stripe
- Webbing strap at tack
- Reefing marks
- Adjustable leech line
- Compatible with Smart Tacking

• **Area : 41,5 m²**



ADVANTAGES

- High-aspect rig for maximum performance
- Easy to handle sail plan
- Versatile and balanced sail plan at all sailing angles



I = 16,60 m / 54'5"
J = 5,21 m / 17'1"
P = 16,00 m / 52'5"
E = 5,25 m / 17'2"

MAINSAILS

PERFORMANCE MAINSAIL : 49,5 m²



FURLING MAINSAIL : 39,3 m²



FORESAILS

**PERFORMANCE GENOA 106% :
41,5 m²**



SELF-TACKING JIB : 35,3 m²



**PERFORMANCE GENOA 140% :
54,7 m²**



CODE 0 : 76,4 m²

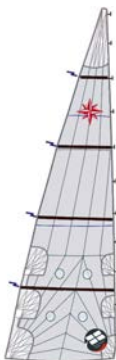


SPECIFICATIONS

BATTENED MAINSAIL

full-batten Performance :

- Triradial cut
- Mylar/taffeta X-Grid fabric in grey colour
- Stainless steel eyes
- UV-stabilised thread
- Draft stripe
- Radial reinforcements
- Adjustable leech line
- Loose-footed
- Fibreglass battens
- 2 reef points each with singleline reefing system
- Replaces the standard mainsail
- **Area : 49,5 m²**



ADVANTAGES

- High-end sail cloth material means less stretch and better performance
- Powerful sail plan in light winds
- Tri radial cut ensures better sail shape and improved resistance to wear.



PERFORMANCE SAILS : MYLAR TAFFETA X-GRID

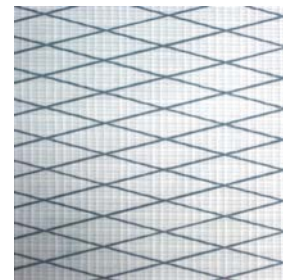
Working in collaboration with Dimension-Polyant and Technique Voiles, Jeanneau has developed a new Mylar Taffeta X-Grid fabric for the Performance range.

The triradial construction of the sail contributes to superior shape holding, but other forces can act on the individual panels. By using a specially-designed X-Grid[®] of fibres angled at 6° laminated into the fabric, better bias control can be achieved which makes the sail more resistant to deformation and aging.

The performance of these new fabrics provides a more stable sail cloth that is lighter, easier to handle, with better shape control over time.

These new Performance sails are easily recognisable; they include a taffeta laminate that is light grey that gives them a very “hi-tech” look.

- 1 - Protective taffeta
- 2 - Polyester film
- 3 - X-Grid[®] fibres
- 4 - Polyester scrim



SPECIFICATIONS

FURLING MAINSAIL :

- Dacron®
- Horizontal panels
- UV-stabilised thread
- Radial reinforcements
- Draft stripe
- Adjustable leech line
- UV protection on clew
- Replaces the standard mainsail
- Included in furling mast option
- **Area : 39,3 m²**



ADVANTAGES

- Easy handling
- Quick furling of the sail
- Easy reefing
- Same height as the classic mainsail
- Compatible with any of the foresail options

SPECIFICATIONS

FURLING GENOA

106% Performance :

- Mylar/taffeta X-Grid fabric in grey colour
- Triradial cut
- UV-stabilised thread
- Webbing strap at head
- Bolt-rope for furler
- Anti-UV protection on foot and leech
- Radial reinforcements
- Draft stripe
- Webbing strap at tack
- Reefing marks
- Adjustable leech line
- Replaces the standard genoa

• **Area : 41,5 m²**



ADVANTAGES

- High-end sail cloth material means less stretch and better performance
- Balanced sail plan for all sailing angles
- Easy to use in all conditions
- Compatible with Smart Tacking

PERFORMANCE SAILS : MYLAR TAFFETA X-GRID

Working in collaboration with Dimension-Polyant and Technique Voiles, Jeanneau has developed a new Mylar Taffeta X-Grid fabric for the Performance range.

The triradial construction of the sail contributes to superior shape holding, but other forces can act on the individual panels. By using a specially-designed X-Grid[®] of fibres angled at 6° laminated into the fabric, better bias control can be achieved which makes the sail more resistant to deformation and aging.

The performance of these new fabrics provides a more stable sail cloth that is lighter, easier to handle, with better shape control over time.

These new Performance sails are easily recognisable; they include a taffeta laminate that is light grey that gives them a very “hi-tech” look.

- 1 - Protective taffeta
- 2 - Polyester film
- 3 - X-Grid[®] fibres
- 4 - Polyester scrim



SPECIFICATIONS

FURLING GENOA

140% Performance :

- Mylar/taffeta X-Grid fabric in grey colour
- Triradial cut
- UV-stabilised thread
- Webbing strap at head
- Bolt-rope for furler
- Anti-UV protection on foot and leech
- Radial reinforcements
- Foam luff
- Draft stripe
- Webbing strap at tack
- Reefing marks
- Adjustable leech line
- Replaces the standard genoa
- Requires deck hardware for large overlapping genoa
- **Area : 54,7 m²**



ADVANTAGES

- High-end sail cloth material means less stretch and better performance
- Powerful sail plan in light winds
- Tri radial cut ensures better sail shape and improved resistance to wear.



PERFORMANCE SAILS : MYLAR TAFFETA X-GRID

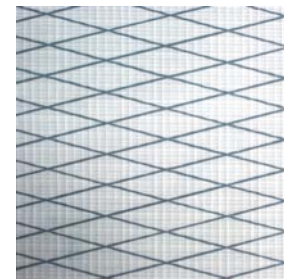
Working in collaboration with Dimension-Polyant and Technique Voiles, Jeanneau has developed a new Mylar Taffeta X-Grid fabric for the Performance range.

The triradial construction of the sail contributes to superior shape holding, but other forces can act on the individual panels. By using a specially-designed X-Grid[®] of fibres angled at 6° laminated into the fabric, better bias control can be achieved which makes the sail more resistant to deformation and aging.

The performance of these new fabrics provides a more stable sail cloth that is lighter, easier to handle, with better shape control over time.

These new Performance sails are easily recognisable; they include a taffeta laminate that is light grey that gives them a very “hi-tech” look.

- 1 - Protective taffeta
- 2 - Polyester film
- 3 - X-Grid[®] fibres
- 4 - Polyester scrim



SO449 - 07/2018

SPECIFICATIONS

SELF-TACKING FURLING JIB :

- Mylar/taffeta X-Grid fabric in grey colour
- Triradial cut
- UV-stabilised thread
- Webbing strap at head
- Bolt-rope for furler
- Anti-UV protection on foot and leech
- Draft stripe
- Radial reinforcements
- Webbing strap at tack
- Adjustable sheet attachment
- Adjustable leech line
- Replaces the standard genoa
- Requires deck hardware for self-tacking jib
- **Area : 35,3 m²**



ADVANTAGES

- Hands-free tacking
- Great up-wind performance
- Perfect for short-handed sailing

PERFORMANCE SAILS : MYLAR TAFFETA X-GRID

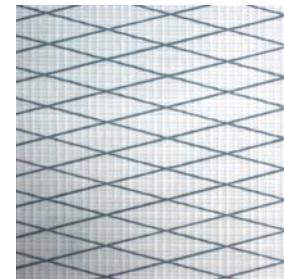
Working in collaboration with Dimension-Polyant and Technique Voiles, Jeanneau has developed a new Mylar Taffeta X-Grid fabric for the Performance range.

The triradial construction of the sail contributes to superior shape holding, but other forces can act on the individual panels. By using a specially-designed X-Grid[®] of fibres angled at 6° laminated into the fabric, better bias control can be achieved which makes the sail more resistant to deformation and aging.

The performance of these new fabrics provides a more stable sail cloth that is lighter, easier to handle, with better shape control over time.

These new Performance sails are easily recognisable; they include a taffeta laminate that is light grey that gives them a very “hi-tech” look.

- 1 - Protective taffeta
- 2 - Polyester film
- 3 - X-Grid[®] fibres
- 4 - Polyester scrim



SO449 - 07/2018

SPECIFICATIONS

CODE 0

sur emmagasineur Selden :

- Laminate Mylar/Aramid X-Grid fabric in light grey
- Triradial cut
- Anti twist luff cord
- UV-stabilised thread
- Straps for sheet attachment
- Adjustable leech and foot lines
- Requires rigging for asymmetrical spinnaker / Code 0
- **Area : 76,4 m²**



ADVANTAGES

- A light wind sail designed for use between 60° and 120°
- Continue to sail when others have given up and turned on the motor
- Continuous line furler allows easy deployment and furling from the cockpit
- Ideal addition to boats with small overlapping jibs and self-tacking jibs



CODE 0: MYLAR ARAMID X-GRID

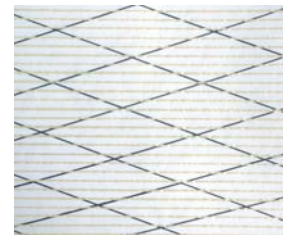
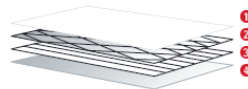
For the development of the new Code 0 sails on a continuous line furler, Jeanneau selected a sail cloth that is perfectly adapted for use in light airs. Highly resistant, light weight and able to be furled, the Mylar Aramid X-Grid has a light grey finish that is translucent.

Unidirectional Aramid fibres, vacuum-bagged together between two polyester films, provide an unequalled resistance to weight ratio. This ultra light sail is easy to handle and fills with the slightest puff of wind. Adding the X-Grid® polyester fibres at a 6° angle provides excellent bias control in all directions and improves sail shaping, as well as, resistance to tearing.

Lastly, a taffeta is added to the external laminate of the sail cloth to protect the sail from ultraviolet light and wear during furling or storage.

The Code 0 sails from Jeanneau integrate these high-performance materials to meet the exacting demands of our owners. In addition to these high-end materials, the look of these sails sets Jeanneau apart.

- 1 - Polyester film
- 2 - X-Grid® fibres
- 3 - Unidirectional Aramid fibres
- 4 - Protective taffeta



SO449 - 07/2018

PRISMA PROCESS



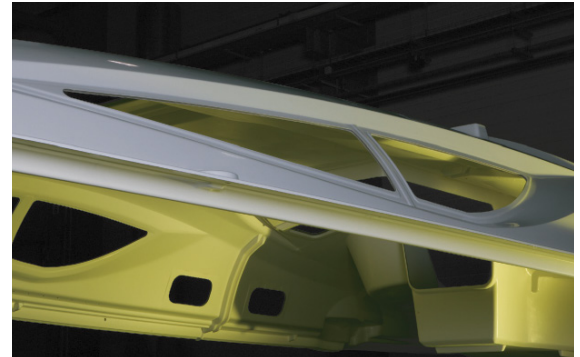
Leader in vacuum bagging technology for the construction of racing boats, JTA developed an resin injection process applicable to the construction of cruising boats. By using advanced engineering, precisely positioned layers of glass fabric and mat and specially developed core materials, Jeanneau is able to mould a deck to exacting tolerances.

Jeanneau's leadership in this domain gives it a substantial advantage over its competitors and ensures unequalled quality to the customer.

This 21st century technology allows Jeanneau to manufacture complex fibreglass parts with:

- Perfect finish on both sides (no need for a counter mould)
- Reduced weight (providing the sailboat better stability/performance)
- Increased strength and rigidity of the piece (quality of lay-up)
- Reduction by 90% of VOC emissions (environmentally-friendly)
- Optimum working conditions for the production team (no contact with resins/catalysts)
- High quality parts (precise control of gelcoat, core materials and resin injection)

The deck of the Jeanneau 54 is the largest mass-produced injection fibreglass part in the world.

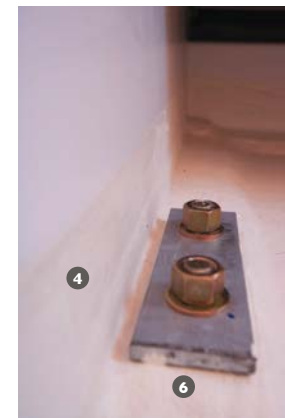


COUNTER-MOULDING

3rd generation hull structure

Jeanneau has long been known for strong and seaworthy boats. Today the technology of boatbuilding has evolved, but our commitment to this tradition has not wavered. The Jeanneau 3rd Generation Hull Structure combines the latest in fiberglass technology with modern yacht design to deliver a structural reinforcement perfectly adapted to the demands of the offshore sailor.

- ❶ High-load zones cut-out for access to the hull
- ❷ Integrated repair area at aft end of keel
- ❸ Structure is precisely placed in the hull
- ❹ Glued and relaminated to the hull for strength
- ❺ Acts as a support for the floorboards
- ❻ Keel bolts located near vertical members and through counter mould and hull
- ❼ Limber holes at hull level for efficient drainage
- ❽ Counter mould remains below level of floorboards and is not visible



ALPI® WOOD

SALES POINTS:

Environmental:

- Ayous (Triplochiton scleroxylon - Sterculiacées) trees in managed forests of indigenous hardwoods are selected and cut, with a constant care given towards long term preservation of natural resources.
- Teak and other soft rainforest woods often come from geopolitically sensitive regions and are not managed in a sustainable way.

Quality:

- These ALPI® wood panels are substantially more expensive and reliable than standard marine plywood. They are used by top of the line furniture manufacturers, as well as many exclusive super-yacht builders (for example Azimut and Ferretti only use ALPI® wood).
- Consistency of finish and colors throughout the boat.
- Elimination of “defects” in wood panels.

Durability:

- Harder finish that is more resistant to humidity
- Better resistance to UV
- Easier repairs as veneer is tinted through and through so clear varnishes can be used



SALOON



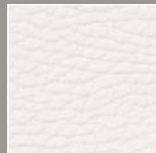
UPHOLSTERY

leather /
leatherette ▶
Chocolat



**BACKRESTS
& SEATS**

▶ Pure White



CURTAINS

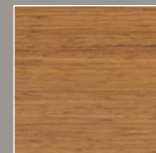
▶ Anthracite Grey



Infill cushion for convertible berth in Linen

INTERIOR WOOD

▶ Standard :
Teak



▶ Option :
Light Oak



FLOOR

▶ Standard:
Light Oak laminate



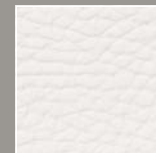
▶ Option:
Dark Oak laminate



CABINS

SEAT

▶ PVC Pure White



BEDS

▶ Premium mattress

Removable mattress cover fabric with Ultra-Fresh® is anti-microbial, anti-bacterial and non-allergenic

SALOON



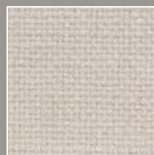
UPHOLSTERY

leather /
leatherette ▶
Chocolat



**BACKRESTS
& SEATS**

▶ Linen



CURTAINS

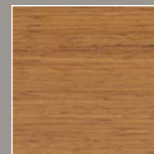
▶ Anthracite Grey



Infill cushion for convertible berth in Linen

INTERIOR WOOD

▶ Standard :
Teak



▶ Option :
Light Oak



FLOOR

▶ Standard:
Light Oak laminate



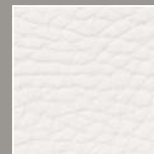
▶ Option:
Dark Oak laminate



CABINS

SEAT

▶ PVC Pure White



BEDS

▶ Premium mattress

Removable mattress cover fabric with Ultra-Fresh® is anti-microbial, anti-bacterial and non-allergenic

SALOON



UPHOLSTERY
 leather /
 leatherette ▶
 Chocolat



**BACKRESTS
 & SEATS**
 ▶ Chestnut



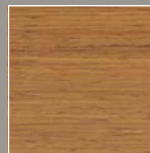
CURTAINS
 ▶ Anthracite
 Grey



Infill cushion for convertible berth in Linen

INTERIOR WOOD

▶ Standard :
 Teak



▶ Option :
 Light Oak



FLOOR

▶ Standard:
 Light Oak laminate



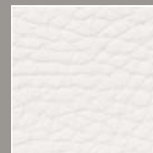
▶ Option:
 Dark Oak laminate



CABINS

SEAT

▶ PVC Pure White



BEDS

▶ Premium mattress

Removable mattress cover fabric with Ultra-Fresh® is anti-microbial, anti-bacterial and non-allergenic

SALOON



UPHOLSTERY

leather / leatherette ▶
Chocolat



BACKRESTS & SEATS

▶ Marine



CURTAINS

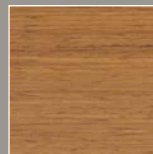
▶ Anthracite Grey



Infill cushion for convertible berth in Linen

INTERIOR WOOD

▶ Standard :
Teak



▶ Option :
Light Oak



FLOOR

▶ Standard:
Light Oak laminate



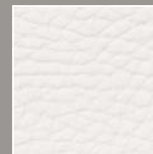
▶ Option:
Dark Oak laminate



CABINS

SEAT

▶ PVC Pure White



BEDS

▶ Premium mattress

Removable mattress cover fabric with Ultra-Fresh® is anti-microbial, anti-bacterial and non-allergenic

SALOON



UPHOLSTERY

leather /
leatherette ▶
Chocolat



**BACKRESTS
& SEATS**

▶ Silver



CURTAINS

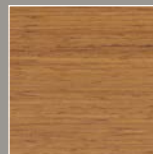
▶ Anthracite Grey



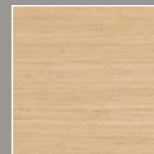
Infill cushion for convertible berth in Linen

INTERIOR WOOD

▶ Standard :
Teak



▶ Option :
Light Oak



FLOOR

▶ Standard:
Light Oak laminate



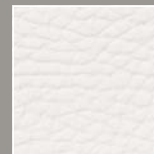
▶ Option:
Dark Oak laminate



CABINS

SEAT

▶ PVC Pure White



BEDS

▶ Premium mattress

Removable mattress cover fabric with Ultra-Fresh® is anti-microbial, anti-bacterial and non-allergenic

EXTERIOR UPHOLSTERY

SPRAYHOOD PROTECTION BIMINI / LAZY BAG



▶ Sunbrella® Taupe Plus



COCKPIT CUSHIONS



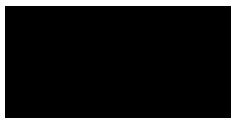
▶ Sunbrella® Sling Taupe



**Jeanneau proposes 10 choices of hull colours and finishes.
Customize your boat!**

HULL WRAPPING

▶ Gloss metallic black



▶ Brushed titanium



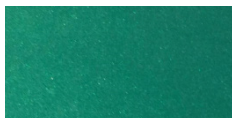
▶ Gloss metallic dark bleu



▶ Matte metallic frosty blue



▶ Pearl dark green



▶ Matte metallic blaze orange



▶ Gloss metallic brown



▶ Gloss burgundy



▶ Gelcoat white



▶ Champagne



AVANTAGES OF VINYL HULL WRAPPING

- Customized
- Unique
- Less expensive than paint
- Repairable
- Many colours and finishes
- Removable
- Easy for the resale

To complete this offer, 4 choices of hull striping are available.

HULL STRIPING

▶ 801 black



▶ 893 Charcoal Metallic



▶ Gloss metallic dark bleu



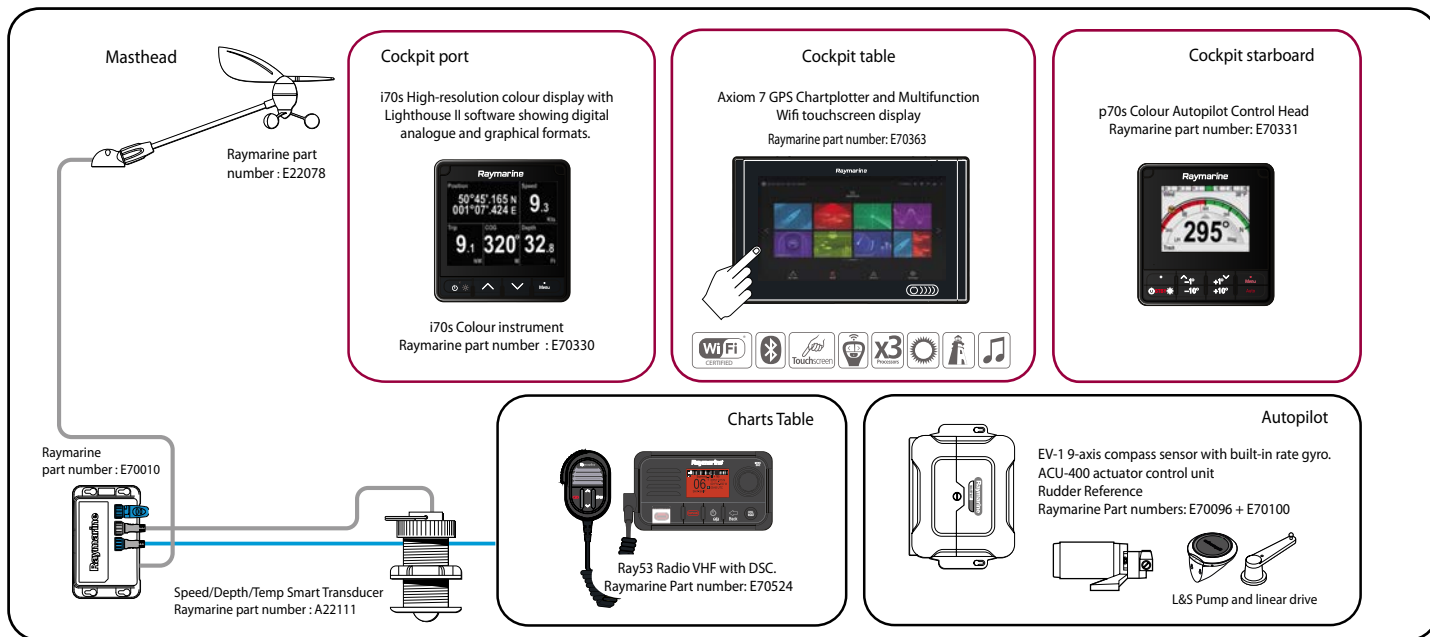
▶ White



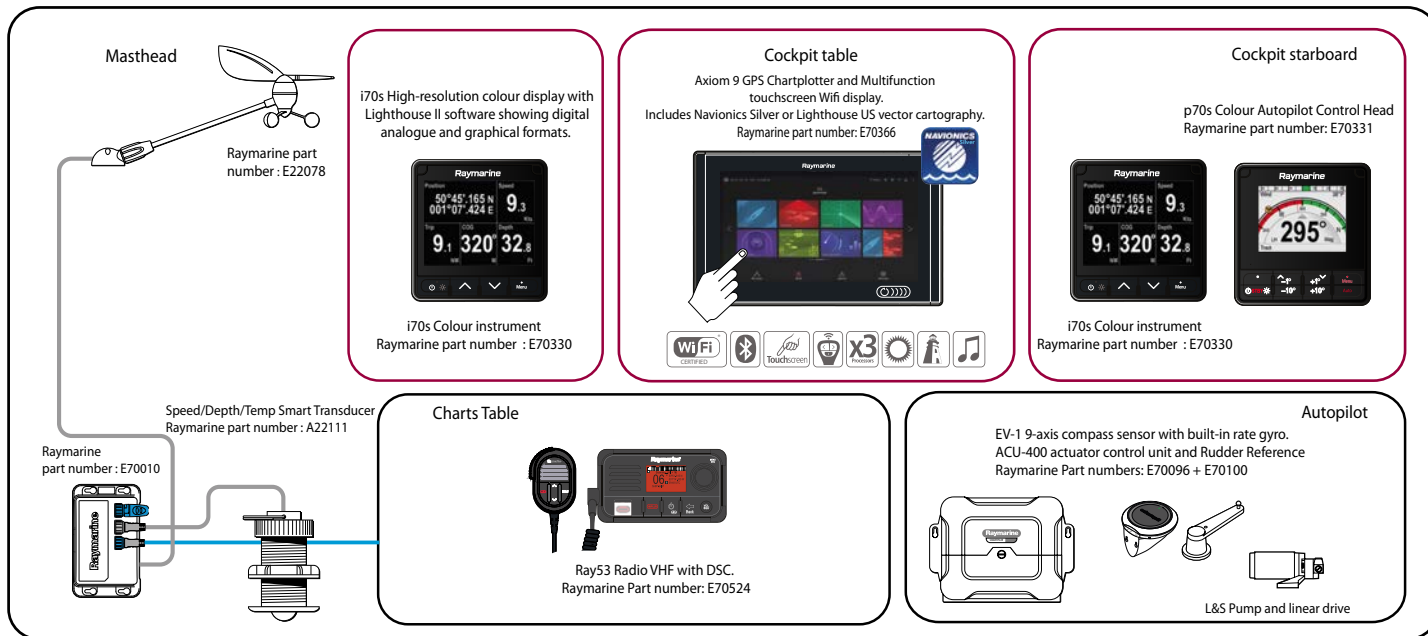
▶ Champagne



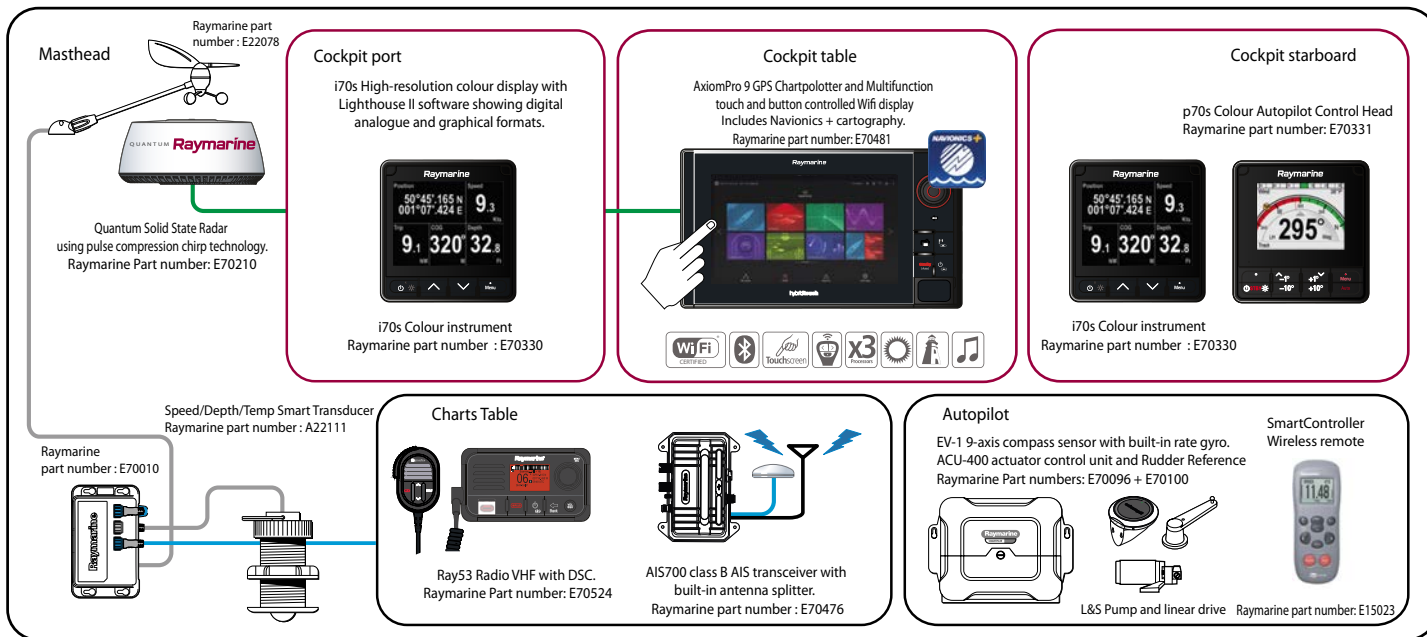
Sun Odyssey 419 - 449 Cruising Electronic Pack



Sun Odyssey 419 - 449 Offshore Electronic Pack



Sun Odyssey 419 - 449 Ocean Electronic Pack





July 2018 - Non contractual document