

Sun Odyssey

419



## S U M M A R Y

- > SPECIFICATIONS
- > KEY POINTS
- > EXTERIOR
- > INTERIOR
- > SAILS
- > CONSTRUCTION
- > UPHOLSTERY
- > VINYL HULL WRAP
- > ELECTRONIC PACKAGES



JEANNEAU

**Prism**  **Process**  
YACHTS AND BOATS



## TECHNICAL INFORMATION

Overall length with bowsprit: ..... 12,76 m / 41' 10"  
 Overall length: ..... 12,34 m / 40' 5"  
 Hull length: ..... 11,99 m / 39' 4"  
 Waterline length: ..... 11,00 m / 36' 1"  
 Beam: ..... 3,99 m / 13' 1"

Displacement: ..... 7.860 kg / 17.328 lbs  
 Standard keel draft: ..... 2,10 m / 6' 10"  
 Shoal draft: ..... 1,55 m / 5' 1"

Cabins: ..... 2 / 3  
 Berths: ..... 4 / 6 (+2)

Engine power: ..... Yanmar 40 Hp / 29,4 kW  
 ..... Yanmar Common Rail 45 Hp / 33 kW  
 Fuel capacity: ..... 200 l / 53 US gal  
 Water capacity: ..... 330 l / 87 US gal  
 Cold capacity: ..... 185 l / 49 US gal

Sail area:  
 - Standard ..... 76 m<sup>2</sup> / 818 Sq ft

CE category: ..... A9 / B10 / C12  
 Designers: ..... Philippe Briand - Jeanneau Design

## VERSIONS • LAYOUTS

Fixed keel version  
 Shoal draft version

2 cabins / 1 head  
 2 cabins / 2 heads  
 3 cabins / 1 head  
 3 cabins / 2 heads

Interior woodwork in Teak or Light Oak

## EXTERIOR

### ***Innovative deck plan and sleek styling:***

- Mainsheet led back to each helm: integrated lines make for a clean and safe deck layout
- Flush hatches
- Easy access to the sea via a fold-down transom

### ***Completely re-designed sail plan choices can be ordered “à la carte” :***

- Furling mainsail
- Performance mainsail
- 106% performance jib
- 140% performance genoa
- Self-tacking jib
- Code 0



## INTERIOR

### ***Contemporary interior design:***

- Lots of light and ventilation from 8 hull ports and plenty of flush hatches and ports
- Latest generation of Alpi Teak finish and, matte varnish gives the woodwork a luxurious feel
- Contemporary LED lighting sets off the interior
- Forward visibility through specially-designed curved hatch
- Fully separate shower in aft head compartment
- Contemporary styling and high-end materials

### ***Designed for personalisation:***

- Choice of woodwork : Teak or Light oak



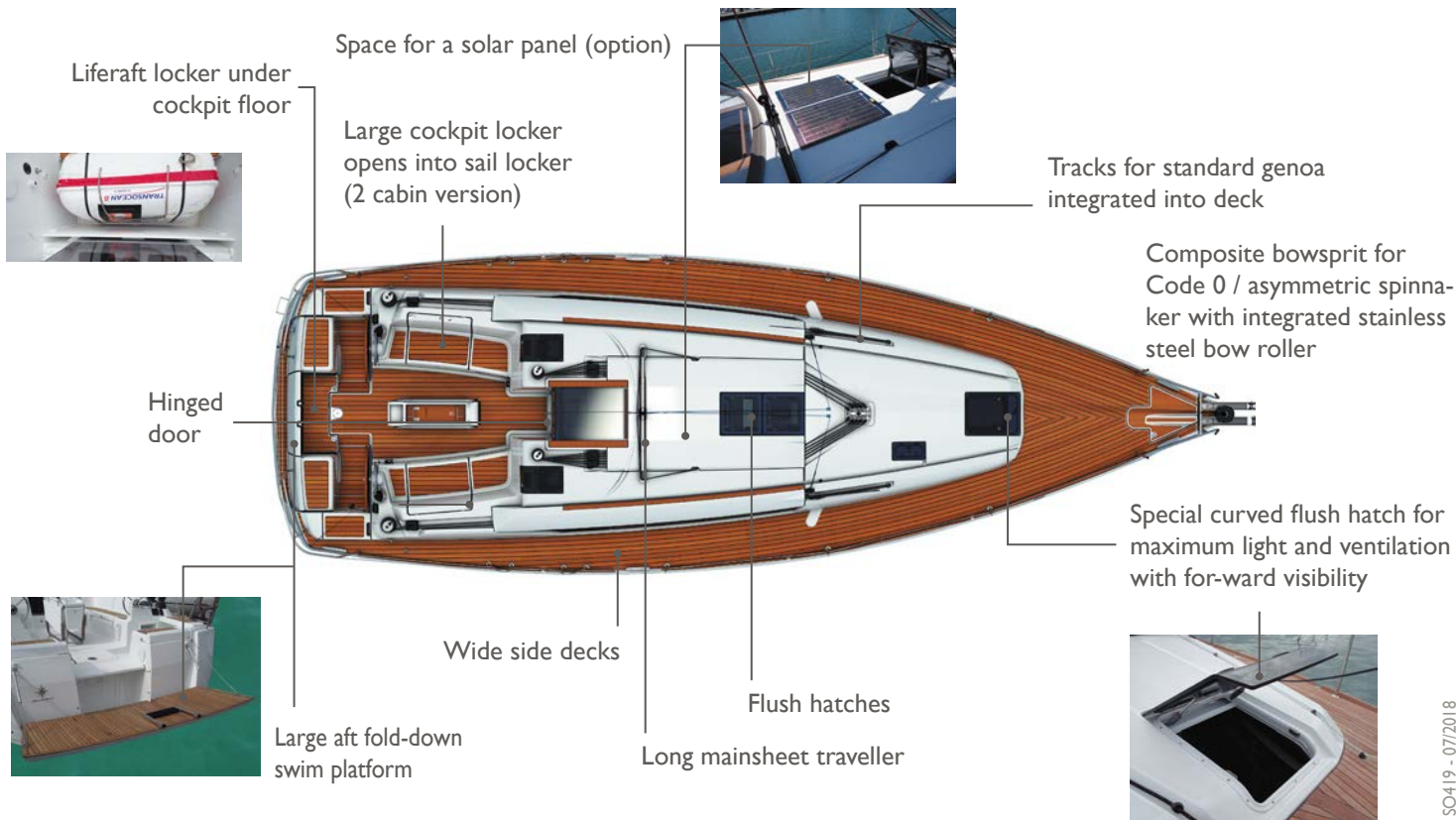
**Teak (standard)**



**Light oak**

- A palette of interior fabrics selected by our interior designers to adapt the interior to the taste of each client

DECK



DECK (continued)

Line storage lockers under helm seats keep helm station clear



2 large cockpit lockers



Curved plexi windows in aft cabins provide light

Twin-helm design to facilitate movement and comfort

Large cockpit table with plenty of storage and place for a pivoting GPS mount



Shown with optional wood

Primary winches near helm stations

Main and jib sheets lead aft

## A TRULY MULTIPURPOSE BOWSPRIT

### Better look:

- Modern and elegant
- Sculpted fiberglass part flows into hull lines



### Better anchoring:

- Stainless steel anchor fitting is positioned further from the bow to ensure more clearance
- Anchor roller is closer to the centerline for easier anchoring and retrieval and less hunting when at anchor
- Fixed, metallic bobstay protects the bow and stays out of the way when anchoring

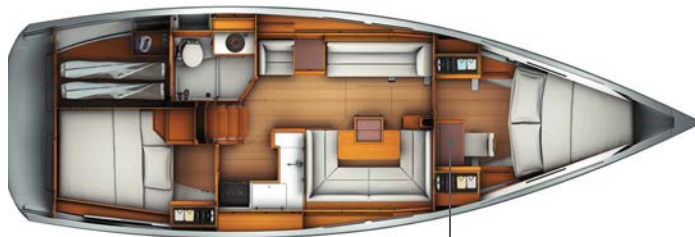
### Better sailing:

- 1 - Reinforced attachment point for Code 0
- 2 - Additional tack point attachment at the end of the bowsprit for larger asymmetric spinnakers



LAYOUTS

**2 cabins version / 1 head**



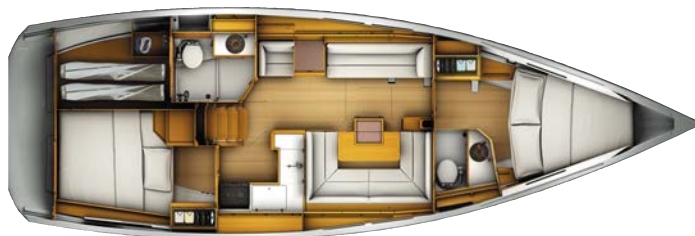
(optional desk/vanity)

**3 cabins version / 1 head**



(optional desk/vanity)

**2 cabins version / 2 heads**

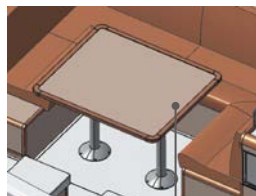


**3 cabins version / 2 heads**



SALOON - GALLEY

L galley with return provides comfortable cooking even while underway



Standard saloon table with removable legs

Upgrade table (option) with large surface, integrated bar and transformable into a berth



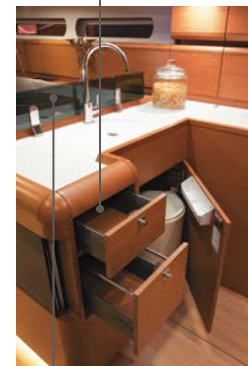
Optional pillow back rests

Storage compartments under the seating

Direct access to the hull and structure under the removable floorboards

Multiple storage cabinets with fiddles

Plenty of storage compartments and cabinets



Glass splash guard protects seating area

Gentle companionway, and large engine compartment with highend insulation and numerous access panels



Galley includes double sinks in stainless steel, lots of counter space and a fridge compartment with 12v refrigeration



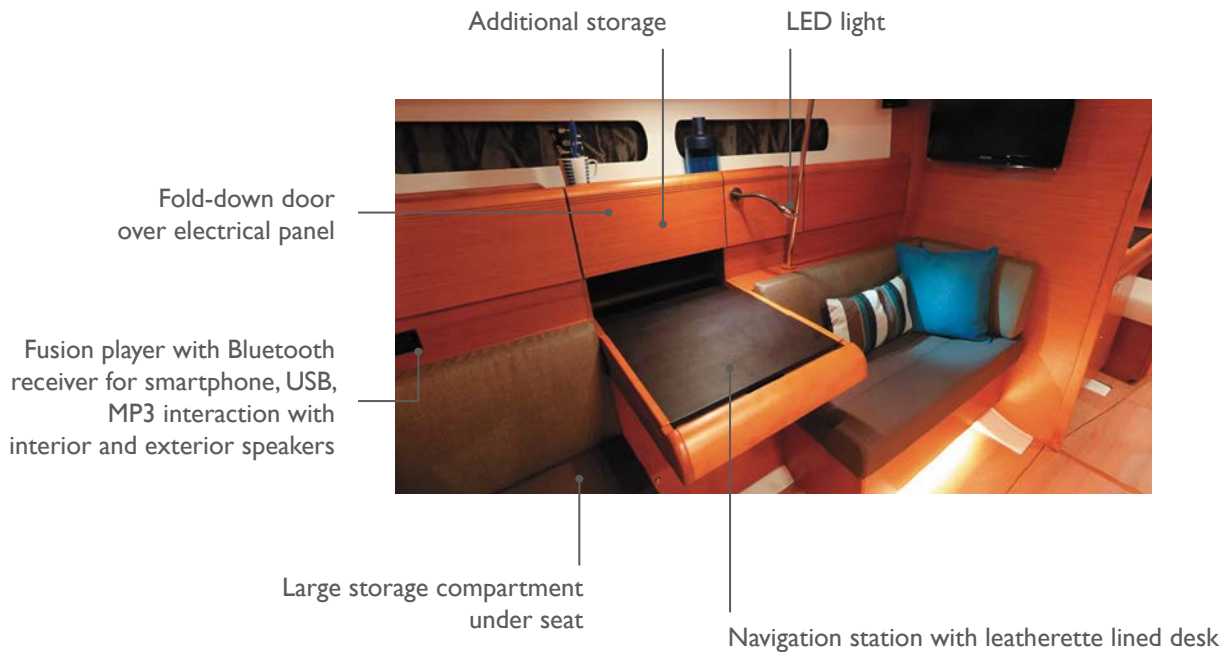
## DELUXE SALOON TABLE

- 2 leaves in order to provide plenty of surface area
- Easily converted to a double berth
- Bar cabinet integrated into base
- Leather-wrapped handrail and central plateau



CHART TABLE

Designed for a life at sea



FORWARD CABIN OWNER

Very spacious forward cabin with double berth

Second hanging locker and other storage compartments

2 hull ports, 2 flush deck hatches provide light and ventilation

2 Large hanging lockers and multiple storage lockers



Indirect LED in each cabin

Leatherette-lined bureau with chair (option)



or possibility of second head compartment (option)



AFT CABINS

Each aft cabin has 1 opening hatch, 1 opening port, 1 hull port and a curved plexi port for light and ventilation



Large aft cabin with hanging locker

Indirect LED

Port aft head with large toilet, separate shower compartment (trim level), stainless steel sink and plenty of light and ventilation

## SAIL AND RIG PLANS: Sails for every sailor

### Select the sail plan that best fits your style :

- **High aspect ratio rig** for maximum performance while limiting the loads on the sheets.
- Inboard shrouds allow better trim angle on the genoa and keeps the side decks clear
- Choice of self-tacking jib, Performance sails in Mylar/taffeta, fully-battened or furling mainsail...
- **Code 0** offered as an option for sailing in light wind conditions



## SPECIFICATIONS

### BATTENED MAINSAIL:

- Dacron®
- Horizontal panels
- Stainless steel eyes
- UV-stabilised thread
- Draft stripe
- Radial reinforcements
- Adjustable leech line
- Loose-footed
- 2 reef points each with singleline reefing system

• **Area : 43,5 m<sup>2</sup>**



### SHORT OVERLAPPING FURLING GENOA (106%) :

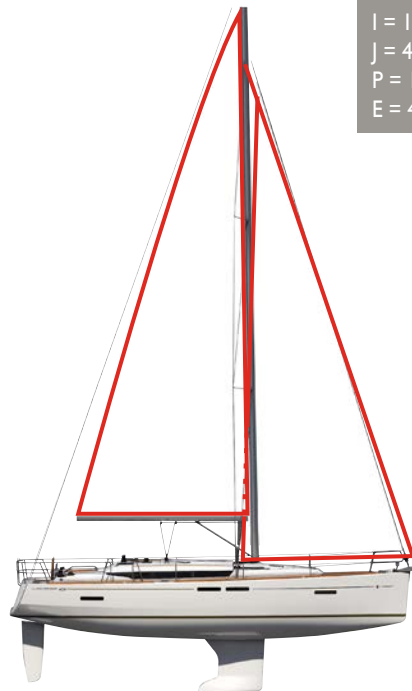
- Dacron®
- Horizontal panels
- UV-stabilised thread
- Webbing strap at head
- Bolt-rope for furler
- Anti-UV protection on foot and leech
- Draft stripe
- Webbing strap at tack
- Reefing marks
- Adjustable leech line
- Compatible with Smart Tacking

• **Area : 32,5 m<sup>2</sup>**



## ADVANTAGES

- High-aspect rig for maximum performance
- Easy to handle sail plan
- Versatile and balanced sail plan at all sailing angles



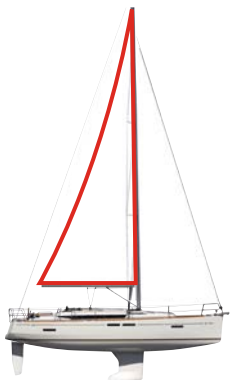
I = 15,50 m / 50'10"  
J = 4,52 m / 14'9"  
P = 15,00 m / 49'2"  
E = 4,90 m / 16'

MAINSAILS

**PERFORMANCE MAINSAIL : 43,5 m<sup>2</sup>**



**FURLING MAINSAIL : 34,2 m<sup>2</sup>**



FORESAILS

**PERFORMANCE GENOA 106% :  
32,5 m<sup>2</sup>**



**SELF-TACKING JIB : 28,2 m<sup>2</sup>**



**PERFORMANCE GENOA 140% :  
46,1 m<sup>2</sup>**



**CODE 0 : 70 m<sup>2</sup>**



## PERFORMANCE SAILS : MYLAR TAFFETAS X-GRID

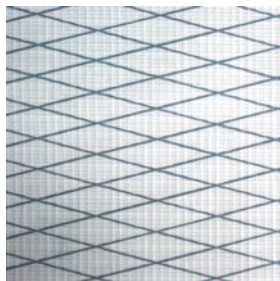
Working in collaboration with Dimension-Polyant and Technique Voiles, Jeanneau has developed a new Mylar Taffeta X-Grid fabric for the Performance range.

The tri-radial construction of the sail contributes to superior shape holding, but other forces can act on the individual panels. By using a specially-designed X-Grid® of fibres angled at 6° laminated into the fabric, better bias control can be achieved which makes the sail more resistant to deformation and aging.

The performance of these new fabrics provides a more stable sail cloth that is lighter, easier to handle, with better shape control over time.

These new Performance sails are easily recognisable; they include a taffeta laminate that is light grey that gives them a very “hi-tech” look.

- 1 - Protective taffetas
- 2 - Polyester film
- 3 - X-Grid® fibres
- 4 - Polyester scrim

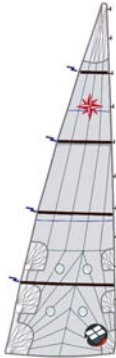




## SPECIFICATIONS

### FULL-BATTENED PERFORMANCE MAINSAIL :

- Triradial cut
- Mylar/taffeta X-Grid fabric in grey colour
- Stainless steel eyes
- UV-stabilised thread
- Draft stripe
- Radial reinforcements
- Adjustable leech line
- Loose-footed
- Fibreglass battens
- 2 reef points each with singleline reefing system
- Replaces the standard mainsail
- **Area : 43,5 m<sup>2</sup>**



## ADVANTAGES

- High-end sail cloth material means less stretch and better performance
- Powerful sail plan in light winds
- Tri radial cut ensures better sail shape and improved resistance to wear.



## SPECIFICATIONS

### FURLING MAINSAIL:

- Dacron®
- Horizontal panels
- UV-stabilised thread
- Radial reinforcements
- Draft stripe
- Adjustable leech line
- UV protection on clew
- Replaces the standard mainsail
- Included in furling mast option
- **Area : 34,2 m<sup>2</sup>**



## ADVANTAGES

- Easy handling
- Quick furling of the sail
- Easy reefing
- Same height as the classic mainsail
- Compatible with any of the foresail options

## SPECIFICATIONS

### FURLING GENOA

#### 106% Performance :

- Mylar/taffeta X-Grid fabric in grey colour
- Triradial cut
- UV-stabilised thread
- Webbing strap at head
- Bolt-rope for furler
- Anti-UV protection on foot and leech
- Radial reinforcements
- Draft stripe
- Webbing strap at tack
- Reefing marks
- Adjustable leech line
- Replaces the standard genoa

• **Area : 32,5 m<sup>2</sup>**



## ADVANTAGES

- High-end sail cloth material means less stretch and better performance
- Balanced sail plan for all sailing angles
- Easy to use in all conditions
- Compatible with Smart Tacking

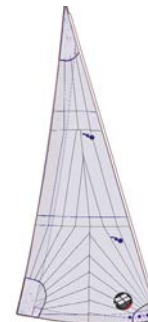
## SPECIFICATIONS

### FURLING GENOA

#### 140% Performance :

- Mylar/taffeta X-Grid fabric in grey colour
- Triradial cut
- UV-stabilised thread
- Webbing strap at head
- Bolt-rope for furler
- Anti-UV protection on foot and leech
- Radial reinforcements
- Foam luff
- Draft stripe
- Webbing strap at tack
- Reefing marks
- Adjustable leech line
- Replaces the standard genoa
- Requires deck hardware for large overlapping genoa

• **Area : 46,1 m<sup>2</sup>**



## ADVANTAGES

- High-end sail cloth material means less stretch and better performance
- Powerful sail plan in light winds
- Tri radial cut ensures better sail shape and improved resistance to wear.

## SPECIFICATIONS

### SELF-TACKING FURLING JIB :

- Mylar/taffeta X-Grid fabric in grey colour
  - Triradial cut
  - UV-stabilised thread
  - Webbing strap at head
  - Bolt-rope for furler
  - Anti-UV protection on foot and leech
  - Draft stripe
  - Radial reinforcements
  - Webbing strap at tack
  - Adjustable sheet attachment
  - Adjustable leech line
  - Replaces the standard genoa
  - Requires deck hardware for self-tacking jib
- **Area : 28,2 m<sup>2</sup>**



## ADVANTAGES

- Hands-free tacking
- Great up-wind performance
- Perfect for short-handed sailing

## SPECIFICATIONS

### CODE 0

#### Selden continuous line furler :

- Laminate Mylar/Aramid X-Grid fabric in light grey
- Triradial cut
- Anti twist luff cord
- UV-stabilised thread
- Straps for sheet attachment
- Adjustable leech and foot lines
- Requires rigging for asymmetrical spinnaker / Code 0
- **Area : 70 m<sup>2</sup>**



## ADVANTAGES

- A light wind sail designed for use between 60° and 120°
- Continue to sail when others have given up and turned on the motor
- Continuous line furler allows easy deployment and furling from the cockpit
- Ideal addition to boats with small overlapping jibs and self-tacking jibs



## CODE 0: MYLAR ARAMID X-GRID

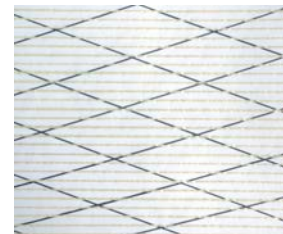
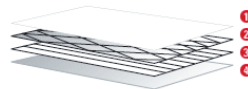
For the development of the new Code 0 sails on a continuous line furler, Jeanneau selected a sail cloth that is perfectly adapted for use in light airs. Highly resistant, light weight and able to be furled, the Mylar Aramid X-Grid has a light grey finish that is translucent.

Unidirectional Aramid fibres, vacuum-bagged together between two polyester films, provide an unequalled resistance to weight ratio. This ultra light sail is easy to handle and fills with the slightest puff of wind. Adding the X-Grid® polyester fibres at a 6° angle provides excellent bias control in all directions and improves sail shaping, as well as, resistance to tearing.

Lastly, a taffeta is added to the external laminate of the sail cloth to protect the sail from ultraviolet light and wear during furling or storage.

The Code 0 sails from Jeanneau integrate these high-performance materials to meet the exacting demands of our owners. In addition to these high-end materials, the look of these sails sets Jeanneau apart.

- 1 - Polyester film
- 2 - X-Grid® fibres
- 3 - Unidirectional Aramid fibres
- 4 - Protective taffeta



SO419 - 07/2018

## PRISMA PROCESS



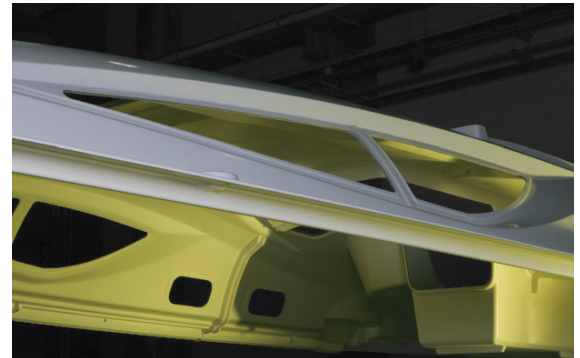
Leader in vacuum bagging technology for the construction of racing boats, JTA developed an resin injection process applicable to the construction of cruising boats. By using advanced engineering, precisely positioned layers of glass fabric and mat and specially developed core materials, Jeanneau is able to mould a deck to exacting tolerances.

Jeanneau's leadership in this domain gives it a substantial advantage over its competitors and ensures unequalled quality to the customer.

This 21<sup>st</sup> century technology allows Jeanneau to manufacture complex fibreglass parts with:

- Perfect finish on both sides (no need for a counter mould)
- Reduced weight (providing the sailboat better stability/performance)
- Increased strength and rigidity of the piece (quality of lay-up)
- Reduction by 90% of VOC emissions (environmentally-friendly)
- Optimum working conditions for the production team (no contact with resins/catalysts)
- High quality parts (precise control of gelcoat, core materials and resin injection)

The deck of the Jeanneau 54 is the largest mass-produced injection fibreglass part in the world.

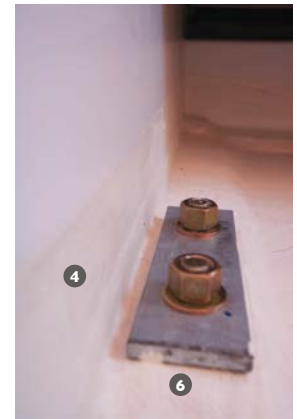


## COUNTER-MOULDING

### 3<sup>rd</sup> generation hull structure

Jeanneau has long been known for strong and seaworthy boats. Today the technology of boatbuilding has evolved, but our commitment to this tradition has not wavered. The Jeanneau 3<sup>rd</sup> Generation Hull Structure combines the latest in fiberglass technology with modern yacht design to deliver a structural reinforcement perfectly adapted to the demands of the offshore sailor.

- ❶ High-load zones cut-out for access to the hull
- ❷ Integrated repair area at aft end of keel
- ❸ Structure is precisely placed in the hull
- ❹ Glued and relaminated to the hull for strength
- ❺ Acts as a support for the floorboards
- ❻ Keel bolts located near vertical members and through counter mould and hull
- ❼ Limber holes at hull level for efficient drainage
- ❽ Counter mould remains below level of floorboards and is not visible



## ALPI® WOOD

### SALES POINTS:

#### Environmental:

- Ayous (Triplochiton scleroxylon - Sterculiacées) trees in managed forests of indigenous hardwoods are selected and cut, with a constant care given towards long term preservation of natural resources.
- Teak and other soft rainforest woods often come from geopolitically sensitive regions and are not managed in a sustainable way.

#### Quality:

- These ALPI® wood panels are substantially more expensive and reliable than standard marine plywood. They are used by top of the line furniture manufacturers, as well as many exclusive super-yacht builders (for example Azimut and Ferretti only use ALPI® wood).
- Consistency of finish and colors throughout the boat.
- Elimination of “defects” in wood panels.

### Durability:

- Harder finish that is more resistant to humidity
- Better resistance to UV
- Easier repairs as veneer is tinted through and through so clear varnishes can be used





SALOON



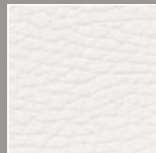
**UPHOLSTERY**

leather /  
leatherette ▶  
Chocolat



**BACKRESTS  
& SEATS**

▶ Pure White



**CURTAINS**

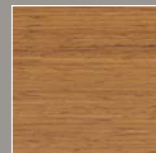
▶ Anthracite Grey



Infill cushion for convertible berth in Linen

INTERIOR WOOD

▶ Standard :  
Teak



▶ Option :  
Light Oak



FLOOR

▶ Standard:  
Light Oak laminate



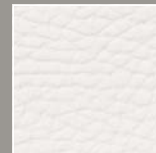
▶ Option:  
Dark Oak laminate



CABINS

**SEAT  
(VANITY  
OPTION)**

▶ PVC Pure White



**BEDS**

▶ Premium mattress

Removable mattress cover  
fabric with Ultra-Fresh® is  
anti-microbial, anti-  
bacterial and non-allergenic

SALOON



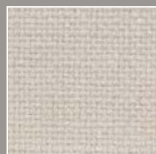
**UPHOLSTERY**

leather /  
leatherette ▶  
Chocolat



**BACKRESTS  
& SEATS**

▶ Linen



**CURTAINS**

▶ Anthracite Grey



Infill cushion for convertible berth in Linen

INTERIOR WOOD

▶ Standard :  
Teak



▶ Option :  
Light Oak



FLOOR

▶ Standard:  
Light Oak laminate



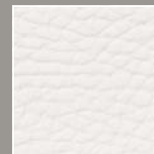
▶ Option:  
Dark Oak laminate



CABINS

**SEAT  
(VANITY  
OPTION)**

▶ PVC Pure White



**BEDS**

▶ Premium mattress

Removable mattress cover  
fabric with Ultra-Fresh® is  
anti-microbial, anti-  
bacterial and non-allergenic

SALOON



**UPHOLSTERY**  
 leather /  
 leatherette ▶  
 Chocolat



**BACKRESTS  
 & SEATS**  
 ▶ Chestnut



**CURTAINS**  
 ▶ Anthracite  
 Grey



Infill cushion for convertible berth in Linen

INTERIOR WOOD

▶ Standard :  
 Teak



▶ Option :  
 Light Oak



FLOOR

▶ Standard:  
 Light Oak laminate

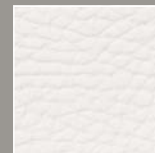


▶ Option:  
 Dark Oak laminate



CABINS

**SEAT  
 (VANITY  
 OPTION)**  
 ▶ PVC Pure White



**BEDS**  
 ▶ Premium mattress

Removable mattress cover fabric with Ultra-Fresh® is anti-microbial, anti-bacterial and non-allergenic

SALOON



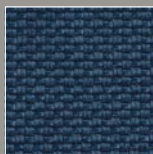
**UPHOLSTERY**

leather /  
leatherette ▶  
Chocolat



**BACKRESTS  
& SEATS**

▶ Marine



**CURTAINS**

▶ Anthracite Grey



Infill cushion for convertible berth in Linen

INTERIOR WOOD

▶ Standard :  
Teak



▶ Option :  
Light Oak



FLOOR

▶ Standard:  
Light Oak laminate



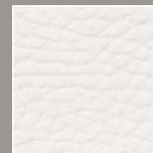
▶ Option:  
Dark Oak laminate



CABINS

**SEAT  
(VANITY  
OPTION)**

▶ PVC Pure White



**BEDS**

▶ Premium mattress

Removable mattress cover  
fabric with Ultra-Fresh® is  
anti-microbial, anti-  
bacterial and non-allergenic

SALOON



**UPHOLSTERY**

leather /  
leatherette ▶  
Chocolat



**BACKRESTS  
& SEATS**

▶ Silver



**CURTAINS**

▶ Anthracite Grey



Infill cushion for convertible berth in Linen

INTERIOR WOOD

▶ Standard :  
Teak



▶ Option :  
Light Oak



FLOOR

▶ Standard:  
Light Oak laminate



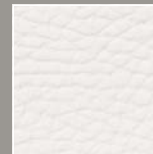
▶ Option:  
Dark Oak laminate



CABINS

**SEAT  
(VANITY  
OPTION)**

▶ PVC Pure White



**BEDS**

▶ Premium mattress

Removable mattress cover fabric with Ultra-Fresh® is anti-microbial, anti-bacterial and non-allergenic

## EXTERIOR UPHOLSTERY

### SPRAYHOOD PROTECTION BIMINI / LAZY BAG



► Sunbrella® Plus Taupe



### COCKPIT CUSHIONS



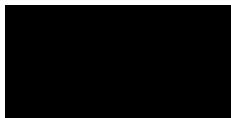
► Sunbrella® Sling Taupe



**Jeanneau proposes 10 choices of hull colours and finishes.  
Customize your boat!**

HULL WRAPPING

▶ Gloss metallic black



▶ Brushed titanium



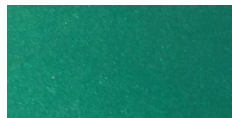
▶ Gloss metallic dark bleu



▶ Matte metallic frosty blue



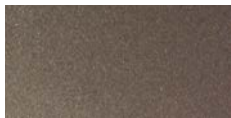
▶ Pearl dark green



▶ Matte metallic blaze orange



▶ Gloss metallic brown



▶ Gloss burgundy



▶ Gelcoat white



▶ Champagne



AVANTAGES OF VINYL HULL WRAPPING

- Customized
- Unique
- Less expensive than paint
- Repairable
- Many colours and finishes
- Removable
- Easy for the resale

**To complete this offer, 4 choices of hull striping are available.**

HULL STRIPING

▶ 801 Black



▶ 893 Charcoal Metallic



▶ Gloss metallic dark bleu



▶ White

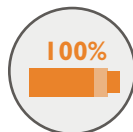


▶ Champagne



LITHIUM BATTERIES

EPSILON – TECHNOLOGIE LIFEPO4



**GREAT AUTONOMY**  
100% of useable energy



**LIGHTWEIGHT!**  
With equivalent energy:  
More than 65% in weight gain  
= reduced volume !



**MAXIMUM SERVICE LIFE**  
≈ 5 000 cycles



**TOLERANCE TO HIGH TEMPERATURES**



**OPTIMUM COMFORT**  
Compatible with powerful  
230V AC/DC inverters!  
NO NEED TO COMPROMISE!



**SUPER-FAST CHARGING**  
2 hours when under power  
1 hour when charging with solar cells  
in optimal conditions



**PEACE OF MIND**  
Very low self-discharge;  
store your battery safely  
for several months

Number of domestic batteries 90Ah Lithium	
Sun Fast 3200	2
Sun Fast 3600	2

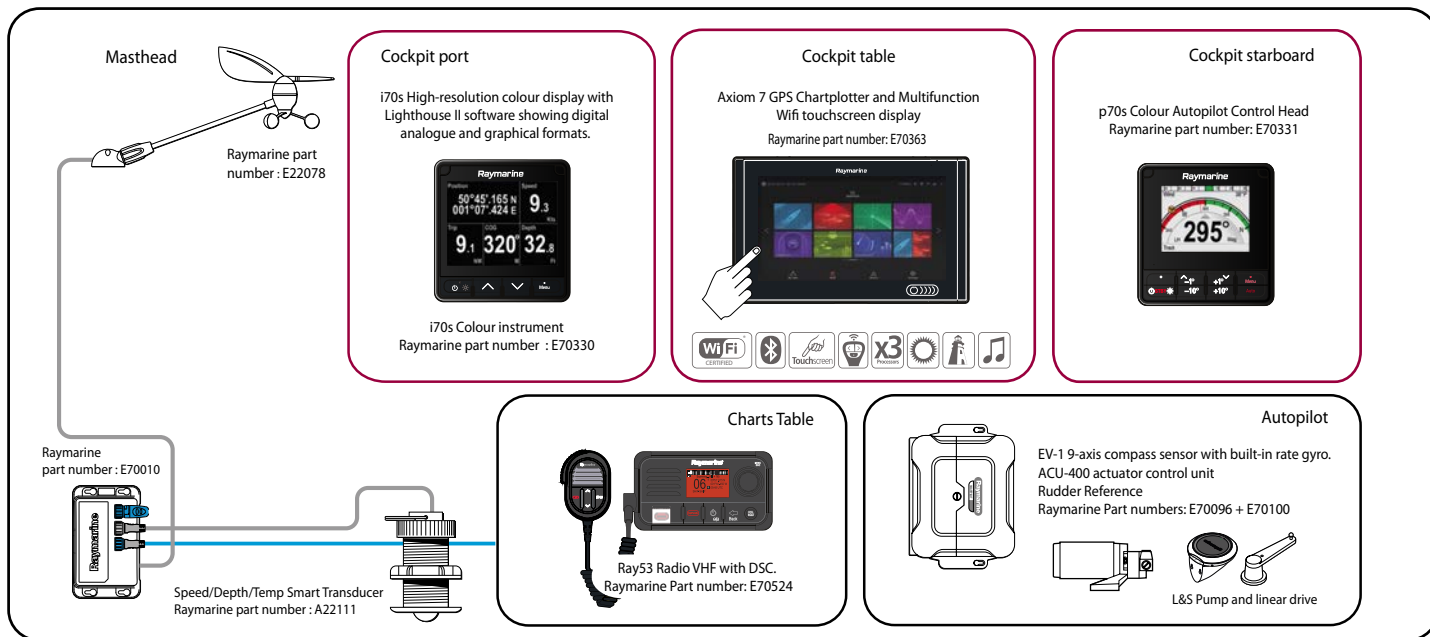
Sun Odyssey 349	1
Sun Odyssey 389	1
Sun Odyssey 410	2
Sun Odyssey 419	2
Sun Odyssey 440	2
Sun Odyssey 490	3

Sun Odyssey 449	2
Sun Odyssey 479	3
Sun Odyssey 519	3

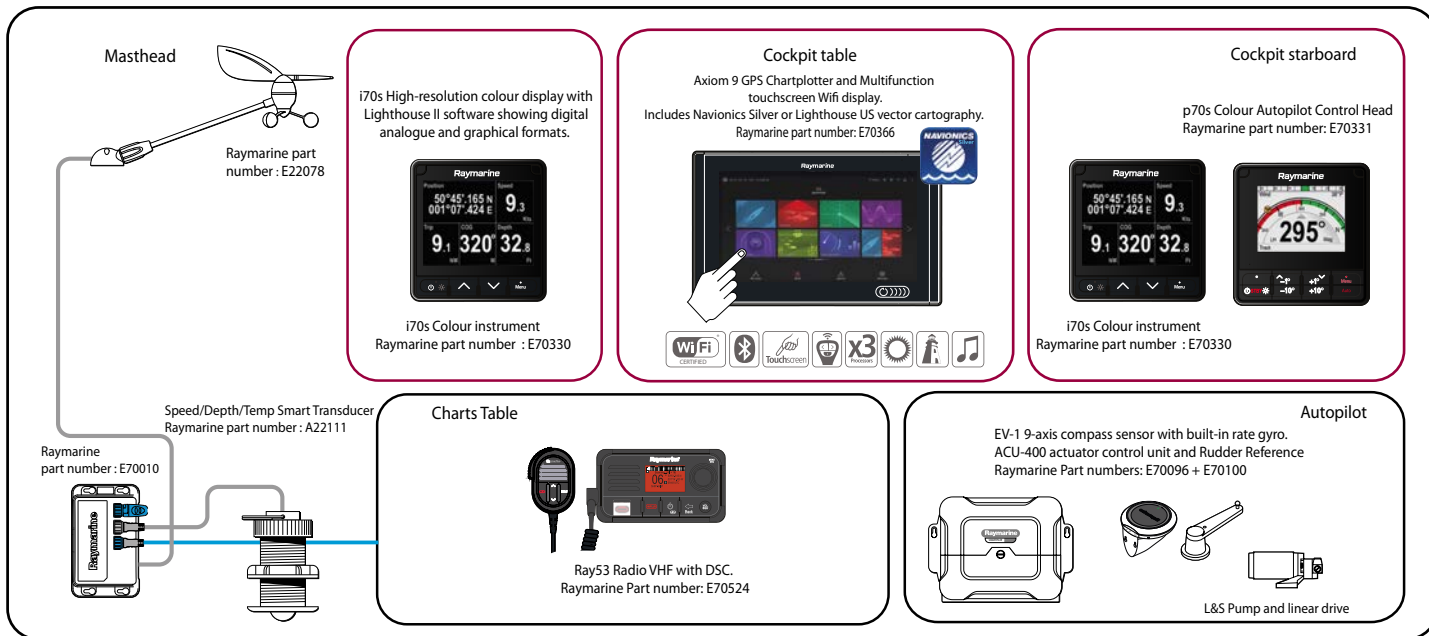
Jeanneau 51	3
Jeanneau 54	3



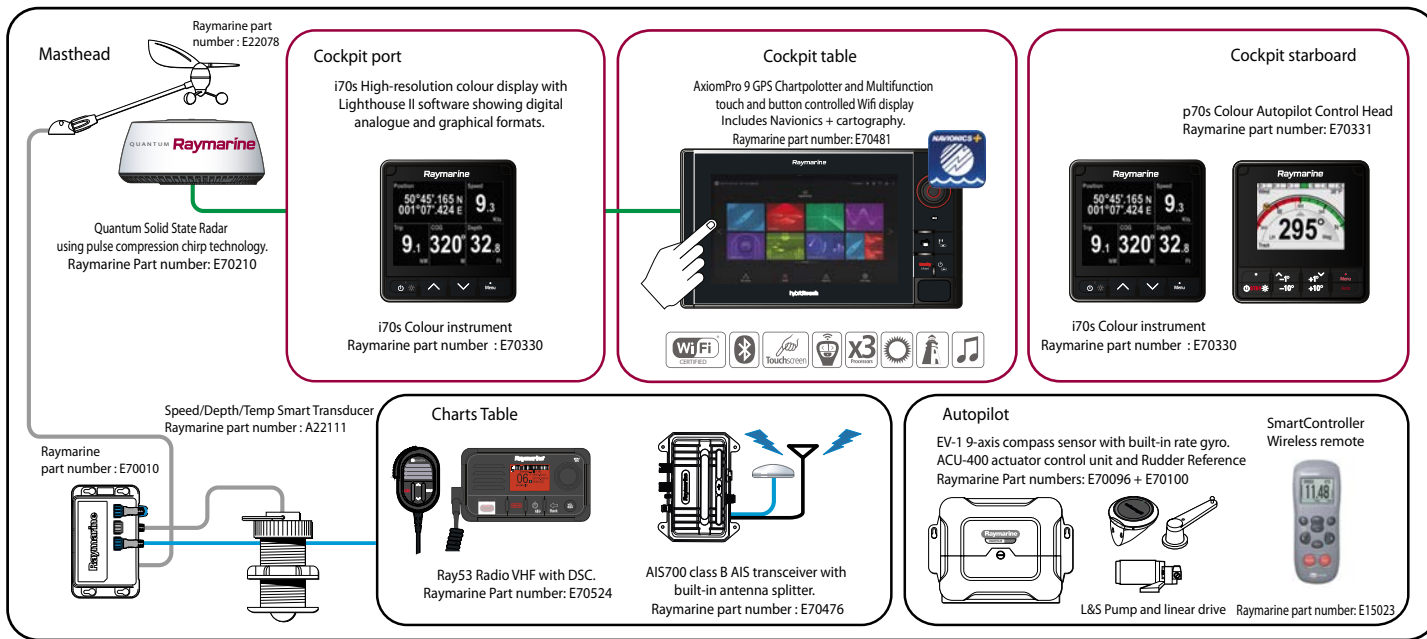
## Sun Odyssey 419 Cruising Electronic Pack



Sun Odyssey 419 Offshore Electronic Pack



## Sun Odyssey 419 Ocean Electronic Pack





July 2018 - Non contractual document